

# Comersus Sophisticated Cart User's Guide



Welcome to **Comersus Sophisticated Cart**

Under Open Source License

*"Build a powerful online business today"*

Comersus-based solutions enable your electronic commerce needs today and provide the framework that will support new ways you can engage in e-commerce in the future.

This page was intentionally left blank.

# Table of Contents

<b>Welcome to Comersus</b>	<b>4</b>	Discount per customer (special prices)	36
Skill Requirements	4	Newsletter, Offer Box and Auctions	36
System Requirements	5		
Technical Support	5	<b>Shipping Options</b>	<b>37</b>
About Rodrigo S. Alhadeff (Comersus founder)	6	Adding a New Shipping Option	37
Comersus Software License for Comersus Cart (Free Distribution)	6	Defining shipping by customer type	37
<b>Getting Started</b>	<b>9</b>	Viewing/Modifying Options for non-real time shipping	37
Installing the software	9	Real Time Shipping (UPS, USPS, Canada Post, Fedex)	37
Windows 2000/3, permission instructions	10	InterShipper (UPS, USPS, Fedex and DHL)	39
Windows XP, permission instructions	10	Bypassing Shipping Calculations	39
Accessing the BackOffice	10	Volume Calculation	39
Setting Up Your Store	11	<b>Payment Options</b>	<b>40</b>
Security Concerns	12	About Real Time Credit Card Processing	40
<b>Settings</b>	<b>15</b>	About PayPal Payments	42
StoreFront Basic Settings (comersus/includes/settings.asp)	15	Adding a Payment Option	43
StoreFront Advanced Settings	16	Configuring a Real Time Payment Option	44
E-mail Settings	18	Configuring Offline Credit Card Processing	44
Changing Your Password	19	Defining payment by customer type	45
General Conditions	19	Modifying a Payment Option	45
Currencies	19	Delayed Payments	45
States and Countries	19	Phone Payments	45
<b>StoreFront</b>	<b>20</b>	<b>Tax Options</b>	<b>47</b>
Getting Ready to Add Products	20	Adding a New Tax Rate by Region	47
Adding New Products	21	Viewing/Modifying Tax Rates by Region	47
Setting Product Options (variations)	23	Adding a New Tax Rate by Product	47
Modifying & Deleting Products	24	<b>Sales and Customers</b>	<b>48</b>
Multilanguage Support	25	Viewing Customer Information	48
Creating and Modifying Product Categories	25	Adding a New Customer	49
Managing Inventory	26	Orders	49
Advanced Stock Calculations	27	Adding custom fields	50
Related Products	28	Managing Your Orders	50
Bundle Products	28	How to Locate an Order	51
Rental Products	29	How to Charge Off-line Credit Card Transactions	52
Compare prices with Amazon	29	Generating Invoices from the BackOffice	53
Suppliers	29	Back-orders	53
Moderating Reviews	30	Reward Points	53
Newsletter	30	Recurring Billing	53
News Page	30	Reports and Charts	54
Auctions	30	Generating Sales Reports	55
Wish List	31		
Google Ad-Sense	31		
Template Store	32		
<b>Discounts and Promotions</b>	<b>33</b>		
Specials and Featured Items	33		
Discount by Code	33		
Discount by Quantity	35		

Affiliates	55	How Language Works	80
Affiliates and Suppliers Own Sales Listing	56	Adding languages to Comersus	80
Adding Forbidden Keywords from sales	56	Editing messages generated by Comersus	80
Serial Codes Management	57	Defining customer languages selection	80
Store Survey	57	Creating a Multilanguage catalog	81
<b>Utilities</b>	<b>58</b>	Changing Gif Texts with language selections	81
Generic SQL	58	<b>Appendix D</b>	<b>82</b>
Reset Functions	58	Frequently Asked Questions	82
Exporting data to Microsoft Excel Spreadsheets	59	<b>Appendix E</b>	<b>90</b>
Exporting data to QuickBooks	59	ERD Database Chart	90
Deleting Unclosed Sessions	59	Relationships and fields	91
Generating StoreFront Links	59	Database description	92
<b>Customer Menu</b>	<b>60</b>	<b>Appendix F</b>	<b>101</b>
Enabling Digital Goods Download	61	Comersus Power Packs	101
<b>Professional Databases</b>	<b>62</b>	<b>Appendix G</b>	<b>102</b>
Creating the Microsoft SQL Server Database	62	Programming reference	102
Creating the mySQL database	63	<b>Contact Information</b>	<b>107</b>
<b>On-Line Payment Gateways</b>	<b>64</b>	Comersus Open Technologies LC	107
2Checkout	64		
Authorize.net SIM	65		
Authorize.net AIM	66		
BeanStream	67		
PayZip	67		
Protx	68		
OzHosting	68		
SecurePost	68		
CyberSource	69		
Payment Processor	69		
EPDQ	70		
LinkPoint API	70		
<b>Performance and Speed</b>	<b>71</b>		
Database	71		
Static Pages	71		
Image Optimization	72		
Compiled Code	72		
Load Balance	72		
Other changes	73		
<b>Troubleshooting</b>	<b>74</b>		
Diagnose the trouble	74		
Get Assistance	75		
Useful Tips	75		
Diagnostics and Tools Application	76		
<b>Appendix A</b>	<b>77</b>		
HTML links to main store pages	77		
<b>Appendix B</b>	<b>78</b>		
Customizing your store's graphical interface	78		
<b>Appendix C</b>	<b>80</b>		

This page was intentionally left blank.

## Welcome to Comersus

---

Comersus is a sophisticated e-commerce system resulting from research and experience accumulated through years of work in electronic commerce strategies. The system's base was developed in the year 1997 in response to a great multinational firm's requirements. The company wanted to replace its e-commerce system, which was based on a famous product developed in Perl and was considered to be complex, rigid, and expensive. Comersus was successfully installed in that site and in others due to numerous recommendations. Finally, the commercial launching of the solution was decided. The commercial implementation of the system was accomplished in the year 2000, in the Open Source mode.

Comersus has been installed all over the world in more than 20000 sites, and has been renowned in an e-commerce development environment as an economical, flexible, sound, and powerful solution.

Comersus solutions provide optimum performance in a variety of industries, including: Software, Book Stores, Retail, High-Tech, Automotive, Consumer Goods, Medical and Services.

### Skill Requirements

Using Comersus does not require that you know any programming language. BackOffice+ allows you to define virtually all properties of your on-line store through an intuitive, point-&-click interface.

However, a basic knowledge of HTML will help you take full advantage of Comersus' features. For example, Comersus can generate for you HTML links that can tie any page on your Web site to your on-line store. In this scenario, simply being familiar with how HTML links work will allow you to connect any area of your Web site to your on-line store.

For an introduction to HTML, try these Web sites:

<http://www.htmlgoodies.com/primers/basics.html>

[http://www.w3schools.com/html/html\\_intro.asp](http://www.w3schools.com/html/html_intro.asp)

If you want to modify and customize Comersus, ASP and Database programming Skills are required. In that case we recommend some books at <http://www.comersus.com/books.asp>

For an introduction to ASP, try also these Web sites:

<http://www.4guysfromrolla.com>

<http://www.learnasp.com>

## System Requirements

Comersus uses **Active Server Pages®** (ASP), a popular programming language developed by Microsoft® for Web-based applications. The basic requirement for Comersus is that your Web server has support for ASP. In addition, your Web server must support **Microsoft Access, SQL Server** or **mySQL** databases, as those are the applications that Comersus uses for its database-driven catalog.

**Note:** If Comersus Open Technologies is hosting your site, you don't have to worry about system requirements. Everything you need to use Comersus Cart is already installed. You can view current hosting plans at <http://www.comersus.com/hosting.asp>

Contact your Web hosting provider to make sure that your Web server can support Comersus. Typically, Windows Server Web hosting packages meet these requirements. Linux or Unix hosting packages with Chilisoft and mySQL database should also be capable to execute Comersus. Just consider that to use mySQL database you will need Power Pack Medium.

**Note:** Comersus is a database driven application. The size of the database will depend on the information that you store in it. If you have a large product catalog and multiple images for each product, the database may get quite large (several MB's). Make sure that you have enough disk space available on your Web server.

To access the BackOffice+ or Lite we recommend that you use **Microsoft® Internet Explorer 5.0** or above. To download the latest version of Internet Explorer, use the following link: <http://www.microsoft.com/ie>

### Specific features requirements

Real Time Shipping: XMLHTTP component *included with A SP3.0*  
Component based payment gateways: XMLHTTP *included with A SP3.0*  
Web File Upload: File System Object *included with IIS*  
BackOffice Exports: File System Object *included with IIS*

*Note: if you are using Comersus in Linux with Chilisoft XMLHTTP and default email components may not be functional in certain versions of Chilisoft.*

## Technical Support

If this User Guide does not contain the answer to a question or problem that you may have with Comersus, please visit the Comersus public forum located on the Web at:

<http://www.comersus.org/forum>

Technical support is available for free at this address, 24 hours a day, 7 days a week. You will obtain free assistance from Comersus Community.

Note that optional one to one Technical Support Programs are also provided by Comersus Open Technologies. To purchase Technical Support Programs please go to <http://www.comersus.com/store>

## About Rodrigo S. Alhadeff (Comersus founder)

Comersus was started by a twenty-two-year-old Argentinean programmer named Rodrigo S. Alhadeff.

Alhadeff started with Computers at 10 years old, using an old Microdigital TK-85 with 16Kb RAM. He learned Basic Language using the TK-85 owner's manual. Soon he made his first artificial-intelligence based friend: "It was a small application to maintain a chat in Spanish. Actually I made 3 friends each one with different personalities. I think I could have replicated my primary school teachers' personalities with enough RAM at that time."

12 years later, Alhadeff developed Comersus 0.1 in one "long night of winter" in order to replace an old Perl Cart that crashed suddenly after a huge traffic day on the company site he worked at.

"Even with the emergency I wanted to make one clean and scalable application to replace our old cart. From the start I thought about modular small pieces of code that can grow to compound a huge system. Easy to fix, debug and scale."

The company went bankrupt and, one week later, Alhadeff still was receiving orders from the e-commerce site. "The cart was the only thing that survived, then I thought: I have to do something with this cart." Comersus name was a combination between something new, modern, related to the shopping cart (e-commerce) and a little historical, solid notion sound (sus) combined with the letters of United States (US) since the Internet and most programming reality was produced in the US. Why Open Source? "I read a lot about Open Source movement, Raymond, Linus, Larry Wall and besides that I like the philosophy, I thought it was the only chance to get good skilled contributors from all around the world in a short period of time."

Some months after the first public release of Comersus, Alhadeff tried in one search engine the words "Powered by Comersus" and became amazed at all the results he got about stores that used Comersus Cart. "I thought that I was on the right track and then I began to dedicate 100% of my time to Comersus."

## Comersus Software License for Comersus Cart (Free Distribution)

Copyright (c) 2002 Comersus Open Technologies LC. All rights reserved.



Redistribution and use in source and binary forms, with or without modification, are permitted provided that the following conditions are met:

1. Redistributions of source code must retain the above copyright notice, this list of conditions and the following disclaimer.
2. Redistributions in binary form must reproduce the above copyright notice, this list of conditions and the following disclaimer in the documentation and/or other materials provided with the distribution.
3. The end-user documentation included with the redistribution, if any, must include the following acknowledgment:

"This product includes Free Comersus Cart developed by Rodrigo S. Alhadeff ([http:// www.comersus.com/](http://www.comersus.com/) )."

Alternately, this acknowledgment may appear in the software itself clearly and legibly at least in cart view.

4. The names "Comersus" and "Comersus Cart Open Source" must not be used to endorse or promote products derived from this software without prior written permission. For written permission, please contact Comersus Open Technologies at 8345 NW 66TH ST #3537 Miami FL 33166-2626 United States

5. Products derived from this software may not be called "Comersus", nor may "Comersus" appear in their name, without prior written permission of Rodrigo S. Alhadeff.

THIS SOFTWARE IS PROVIDED "AS IS" AND ANY EXPRESSED OR IMPLIED WARRANTIES, INCLUDING, BUT NOT LIMITED TO, THE IMPLIED WARRANTIES OF MERCHANTABILITY AND FITNESS FOR A PARTICULAR PURPOSE ARE DISCLAIMED. IN NO EVENT SHALL COMERSUS OR ITS CONTRIBUTORS BE LIABLE FOR ANY DIRECT, INDIRECT, INCIDENTAL, SPECIAL, EXEMPLARY, OR CONSEQUENTIAL DAMAGES (INCLUDING, BUT NOT LIMITED TO, PROCUREMENT OF SUBSTITUTE GOODS OR SERVICES; LOSS OF USE, DATA, OR PROFITS; OR BUSINESS INTERRUPTION) HOWEVER CAUSED AND ON ANY

THEORY OF LIABILITY, WHETHER IN CONTRACT, STRICT LIABILITY, OR TORT (INCLUDING NEGLIGENCE OR OTHERWISE) ARISING IN ANY WAY OUT OF THE USE OF THIS SOFTWARE, EVEN IF ADVISED OF THE POSSIBILITY OF SUCH DAMAGE.

This software consists of voluntary contributions made by many individuals on behalf of Comersus. For more information about Comersus, please see <<http://www.comersus.com/>>.

## Getting Started

---

**B**efore you can start using Comersus, the software must be installed<sup>1</sup> on your server and configured. The following paragraph provides step-by-step instructions on how to perform this task.

### Installing the software

1. Create a folder named Comersus inside WWWRoot (the root of your web server).
2. Unzip comersusXXX.zip inside that folder (right click into comersusXXX.zip, Extract To c:\WWWroot\comersus). Your Comersus folder must have this structure:

```
.          <DIR>      12-20-01  9:22p .
..         <DIR>      12-20-01  9:22p ..
DEFAULT ASP      301  10-11-01 12:46p default.asp
GLOBAL ASA       634  12-02-01 12:33p global.asa
STORE            <DIR>      12-20-01  9:22p store
INCLUDES         <DIR>      12-20-01  9:22p includes
DATABASE         <DIR>      12-20-01  9:22p database
BACKOFFICELITE   <DIR>      12-20-01  9:22p backofficelite
```

3. If you want to use a different path for the database file or a different database open the **/comersus/includes/settings.asp** file using notepad or any other text editor and change pDatabaseConnectionString constant to reflect new location. *Note: in Security Concerns topic you can find more information about why is desirable to change database location before going live.*
4. Define all permissions for database folder and database/comersus.mdb file (instructions below)
5. Open your Web Browser and load <http://yourWebSite.com/comersus/backofficelite> or <http://localhost/comersus/backofficelite> if you have installed Comersus in your local server

6. The first time you run the BackOffice Lite an installation Wizard will be launched. Follow the simple steps to complete the installation. Among other settings you will be asked for a password. Write down the password so you can login at a later time to the BackOffice Lite

## Windows 2000/3, permission instructions

1. Browse to the comersus.mdb file on the server.
2. Right click on the database file.
3. Click Properties, click security tab.
4. Add the IUSR\_MACHINENAME user to the permissions list, and grant this user full control. (where MACHINENAME is the hostname of the server)

## Windows XP, permission instructions

1. Browse to the comersus.mdb file on the server.
2. Right click on database folder.
3. Click Properties, click web sharing tab.
4. Select Share This Folder

## Accessing the BackOffice

This is your entry point into the administration area of your online store. To load the same page at a later time, bookmark the following URL in your browser (make sure you are using Internet Explorer 5.0 or above):

<http://www.yourwebsite.com/comersus/backoffice+> (or backofficeLite if you don't have BackOffice +)

...where "www.yourwebsite.com" is the domain name of your Web site. The browser will display the window shown below.

Comersus' BackOffice+ allows you to manage every aspect of your online store via a user friendly, browser-based interface. When you are using the BackOffice +, you are actually modifying in real-time how your store operates. All settings configured in the BackOffice+ are immediately reflected on your store (e.g. adding a new product, changing a price, etc.).

*Note: Comersus Free Distribution comes with BackOffice Lite. Since BackOffice Lite is a small part of BackOffice+ you can use the following guide to understand how Back Office works also.*

BACKOFFICE+  
WEB MANAGEMENT TOOL

home help contact

settings storefront sales utilities logout

Enter SKU

welcome to the management area

InsithOutBooks.com

User

Password

Submit

Home | Settings | Storefront | Sales & Customers | Utilities | Logout  
2003 Comersus Open Technologies LLC. Under proprietary License.  
Management tool for Comersus Sophisticated Cart.  
http://www.comersus.com

Enter your User and your new password and click on the *Submit* button. You will be logged in and the BackOffice start page will be displayed (shown below). On the left side of the window is the main navigation bar, whose features are described in the following chapters of this manual.

*Note: If you cannot login and you get “authentication data incorrect” download the free Diagnostics and Tools, run it and Reset the Back Office password.*

BACKOFFICE+  
WEB MANAGEMENT TOOL

home help contact

settings storefront sales utilities logout

Enter SKU

Comersus BackOffice Menu The Store is Open. [Close](#)

Hi Admin!, today is 6/31/2003. Since your last login, the store has 0 new visits  
 +2 new orders are [waiting](#)! You have 3 review/s to [moderate](#).

**Main Menu**  
 - [Settings](#)  
 - [Storefront](#)  
 - [Sales & Customers](#)  
 - [Utilities](#)  
 - [Logout](#)

**Information**  
 Permission level: Full Access  
 Last login: 6/10/2003  
 Catalog size: 18 products  
 Next order: #20049  
 Garbage to [clean](#): 5 records  
 Inventory cost: \$32733.00

**Shortcuts**  
[Sales Forecasting](#)  
[Product sales chart](#)  
[List all customers](#)  
[Products admin](#)  
[Stock movements](#)

**Best Sellers**

PRLP (#2)	
PMS07 (#6)	
PXR1 (#0)	

**Products**

PMS07	
PMS0	
PRLP	

**Recent Orders**

Smith, J.	
\$142.734725	
Mullen \$240	
Mullen \$440	

Haiku: After killing a spider, how lonely I feel in the cold of night! \* PS to reload

## Setting Up Your Store

Follow the steps outlined below to quickly configure your store.

- **Configure general store settings.** Using Utilities/Setting Link.
- **Add products to your catalog.** Next, you can start adding products to your store catalog. To do this, select *StoreFront, Products* from the navigation menu, and then click on *Add Products*. The Add Product Option takes you step by step through the process of adding a product to your store, so it's a perfect tool when you are just getting started with Comersus. How to add a new product to your online catalog is the subject of [Chapter 4](#) of this guide.
- **Add shipping options.** After adding products, you will probably want to specify which shipping options you are going to make available to your customers. To do this, select *Store Settings, Shipping* from the navigation menu, and then click on *Add Shipping Type*. Refer to the chapter of this document dedicated to [Shipping Options](#) for more information on this feature.
- **Add payment options.** Then, specify how customers will pay for their orders by adding payment options to your store. Select *Store Settings, Payment Options* from the navigation menu, and then click on *Add New Payment*. There are two main types of payment options: real time and non-real time (also referred to as on-line and off-line payment options). In the first scenario, the payment is processed immediately, which is how credit card transactions are often handled on the Internet. In the second scenario, the payment is collected after the transaction. Setting up a real time payment option requires that you have an account with a payment processing company. Read the [Payment Options](#) section of this guide for details. Depending on the Payment Gateway used you can also define a link Receipt (Order Confirmation Page) and a Silent Response (special signal from the Payment Gateway that will update order status and distribute Digital Goods at Comersus after the payment is authorized)
- **Link to your store.** Finally, use the link to your storefront (<http://www.yourWebSite.com/comersus>) in order to integrate it with your site. For more information about how to accomplish this task, you can also refer to [Appendix A](#).

You're done! Customers will now be able to come to your online store and start purchasing products from you. Comersus has many other features that you can configure at any time: various types of discounts, promotions, affiliates, auctions and much more. This User Guide will describe every one of them in detail.

In the next section, we will take a closer look at how to define a number of general settings for your on-line store.

*Note: consider that some features like Auctions, Real Time UPS, etc are only available with optional Power Packs*

## Security Concerns

Before going live with your store you will have to verify your company security policies and maybe obtain advice from a Security Specialist to avoid the attack of Crackers and fraudulent activities from users.

We will provide some initial tips to secure your store.

**Database:** if you are using Access you must consider that the database is stored in one file named comersus.mdb By default anyone can download the file by knowing the real location and name.

What can you do to prevent this? 1- Rename the database file and change the database folder name also reflecting those changes at comersus/includes/settings.asp 2- If it's possible move the database file to some folder outside public access and relate the file to your store using DSN 3- Add a password to the database folder so if anyone tries to download the file the login screen will appear (Comersus Hosting Service lets you do this since Comersus uses an exclusive mix of Windows and Linux Server) 4- Add a password to the database file from Access and reflect that change to comersus/includes/settings.asp

If you are using SQL Server and mySQL just be sure that your password is not the default and prevent remote DB administration if possible. You may also check with your database vendor for regular patches to security bugs.

**Encrypted information:** Comersus stores sensitive information using RC4 algorithm (or DES if you have purchased Power Pack Premium). If anyone gets a password or credit card directly from the database, he will still have to decrypt that information. The only way to decrypt the information is with the Encryption Key located at settings table. We provide a default encryption setting that must be changed to any other string prior to going live. Consider that all your previous passwords and encrypted data will not be accessible anymore if you change the key. You can use Diagnostics and Tools to reset the password once you have changed the Key in order to grant BackOffice access.

You can also use any other encryption system with Comersus but this will require a customization. Comersus Official Hosting has Third-Party encryption components just in case you need additional security.

**Web Server:** Microsoft IIS had some well known bugs in 3.0 and 4.0 that allow Internet users to view the source code of ASP scripts. As you may imagine this is a dangerous security threat since anyone can view your database location and Encryption Key with access to the source code. Update your web server with the latest patches and subscribe yourself to security lists to be notified about the latest security bugs in the software you are using.

**Logs:** ask your hosting provider about the possibility to view the logs of your FTP server in order to determine if someone else is accessing the files in your web server.

**Passwords:** do not use easy to guess passwords for your database file, FTP server and Comersus admin passwords. Use a combination of letters and numbers and avoid known English dictionary words. Do not write the passwords and change them on a regular basis.

**BackOffice:** Rename BackOffice Folder and use Web Server security to prevent outside access to that folder if possible. The BackOffice will log the last login date so you can verify that nobody uses the BackOffice with your own profile.

**Prevent automated registrations:** This feature adds a random graphic string in the customer registration form. The customer should read and enter the characters to prevent automated registrations. To improve security of this feature you have to create your own graphic combinations with new codes and enter them into comersus\_optBoxCode.asp array

**Credit Card information:** Try to use an online payment gateway since in that case you will get more security validations (CVV2, AVS, etc) and the card number will not be stored in your database. You can always retrieve credit card numbers by using your payment gateway reports.

**Silent Responses:** Rename all Silent Response scripts to avoid the situation where a customer posts an order and then loads in the browser address the Silent Response to change the order status to *paid* without making the payment. Note that this cracking method will not work with some payments like PayPal since they provide additional security rules, but we advise to rename those scripts anyway. Consider also that you will have to set the new script name in the Payment Gateway Control Panel.

**Trojans:** you can implement all security policies explained above but if someone places a Trojan application in your machine, they will probably have access to your files and keystrokes. Avoid the execution of attachments and use an updated Antivirus and IDS such as Black-Ice Defender, Norton Internet Security or Zone-Alarm.

**About Security Check:** you can download Diagnostics and Tools from Comersus Downloads Page. There you can find a Security Check option that will make tests and provide automatic recommendations that could be used as a complement of a manual verification of security conditions.



## Settings

---

The file *Comersus/includes/settings.asp* allows you to configure the database location, database type and default email configuration for Error Trap script. All other settings are contained in settings table in the database and you can modify them with BackOffice+ or Lite.

BackOffice Lite and + Programs also have a settings.asp file located in Comersus/backoffice+(or Lite)/includes/settings.asp where you can configure some basic functions of the BackOffice (like demo mode, path for upload, etc)

### StoreFront Basic Settings (comersus/includes/settings.asp)

By editing this file with a text editor you will be able to define an alternate connection string, database type or database location. You can also define Email Settings for Support Error script: these settings are used for outbound Support Error. Email configuration of Advanced Settings is not used for Support Error since those settings are stored into the database and if some error occurs, probably database will not be accessible.

' Alternate connection strings

' SQL Server local or remote IP in SERVER=

```
'          pDatabaseConnectionString          =          "Driver={SQL
Server};UID=comersus;password=123456;DATABASE=comersus;SERVER=127.0.0.1"
```

' Jet Oledb connection

```
'  pDatabaseConnectionString  =  "Provider=Microsoft.Jet.OLEDB.4.0;"  &  "Data
Source="&server.mappath("../database/comersus.mdb")
```

' DSN connection, you must define the DSN first in your server

```
' pDatabaseConnectionString = "DSN=comersus"
```

' DSN less connection

pDatabaseConnectionString = "Driver={Microsoft Access Driver (\*.mdb)};DBQ=" &server.MapPath("../database/comersus.mdb")&" ;"

' Email Settings for Support Error script (if there's a DB error, this data cannot be retrieved from the DB)

pSupportErrorEmailFrom = "you@yourDomain.com"

pSupportErrorSMTP = "smtp.yourDomain.com"

pSupportErrorEmailComponent = "Jmail" ' options are Jmail, ServerObjectsASPMail1, ServerObjectsASPMail2, PersitsASPMail, CDONTS and BambooSMTP

pSupportErrorShowDetails = -1

## StoreFront Advanced Settings

Using BackOffice+ you can browse to Settings/Configuration. Using BackOffice Lite you can browse to Utilities/Settings option.

From this option you can edit in real time all the advanced settings of the store grouped in several categories.

- **Company Information:** Company or store name and address appear on many shopping cart pages and on most e-mail messages sent to customers. Here you can also specify the phone, fax, zip code, etc. *pCompanyLogo* here you may specify the name of the image file that will be used on store header. The default image is called *logo\_iso2.gif*. Make sure the file is height=58 width=213 pixels or smaller. To upload this image you can transfer the file via FTP to the “comersus/store/images” subfolder on your Web server.
- **StoreFront Behaviour:** *pMaxAddCartQuantity* is the largest quantity your customers will be able to order for one product (i.e. 20 means that they can only order up to 20 units of a certain product). *pMinimumPurchase* is the minimum dollar value of the products added to the shopping cart for your store to accept the order. Orders below the minimum are considered too small and will not be processed. In all cases, customers whose shopping cart contents don't meet one or more of these criteria are notified of the problem during the check out process. *pStoreFrontDemoMode* is an important setting for testing purposes. If you have an error in your store you should switch to demo mode in order to make a debug and try to determine which SQL sentence or script is causing the error. *pOrderPrefix* and *pCustomerPrefix* are used to determine a prefix to be added in the beginning of all automatic numbers for customers and orders. *pIdStore* is used to identify each unique store in a shared environment (you can detect actions from each store and share or not share the cart among several shops for example). *pNoStockAddButton* is used to detect if the product has stock. If it doesn't, Add Button and links will disappear for that product. *pShowStockView* is used to show the stock for the products in the storefront.

*pUseShippingAddress* is used to enable the link to shipping address form in the checkout process. *pRandomPassword* is used to enable random password generator for new customers. *pAllowNewCustomer* is used to enable new customers form in checkout process; if you don't want new customers to register just change this setting. *pStoreLocation* is very important since it defines the domain and folder where Comersus is installed in the server and this location is used by several scripts to send emails, determine the location of certain files, etc. Don't use http; a valid location is localhost/comersus. *pForceSelectOptionals* is used to check if the customer selects at least one variation of the drop down variations before adding. *pEncryptionPassword* is the encryption string for RC4 algorithm. If you want to change this setting, all your previous passwords and encrypted credit cards will not be recognized. Make sure to change the password before you logout or you will not be able to login again to the BackOffice if you changed the encryption password. *pIndexVisitsCounter* is used to increase the visits counter to the store if they arrive to default.asp script (direct access to categories or other parts of the store will not be added). Sometimes you want to disable this setting for performance reasons since you can also count visits using any Visits Counter provided by the web server. *pShowBToBPrice* is used to display Wholesale prices to Retail customers. *pUseEncryptedTotal* is used to encrypt the order total before filling an online payment form such as Authorize.net form. *pSendPlainText* is used to send credit card information unencrypted (useful just for testing purposes, don't enable this setting for a real world store). *pRowsShown* is used for the Dynamic Index table that displays a table filled with products. *pStockQuantityControl* is used to check if there is enough stock in add and recalculate steps.

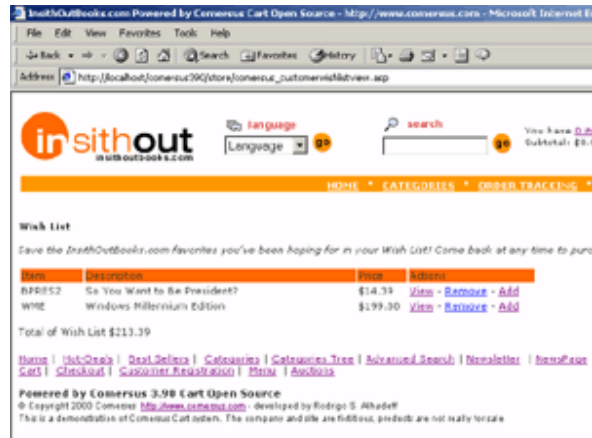
#### ○ **Optional Features:**

- You might want some specific optional features like Wish List, StoreNews, Forgot Password, List Best Sellers, Related Products and *oGetRelatedProductsLimit* (a setting to define how many related products to retrieve), Customer Reviews and *pProductReviewsAutoActive* (to activate all reviews without BackOffice moderation), Email To Friend, Newsletter, Auctions, Real Time Shipping, Price List, CurrencyConversion, One Step Checkout, Fraud Prevention Mode.

Some of these optional features are only available with Power Packs. You can find more information about Power Packs in the Appendix Section

*Note: The Wish List feature of Comersus allows your customers to place items that they like, but are not ready to buy right at that moment, in an ideal basket from which they can retrieve them at any time. The advantage is that when they are ready to order, they don't need to search for those products again. All they have to do is log into their account, select View Wish List, and add to the shopping cart the products that they are now ready to purchase (see image below).*

*To add a product to their Wish List, users will click on the Add to Wish List button located on every product details page in your store. If the Wish List feature is not active, that button is not displayed.*



*To add products to the Wish List visitors must register with your store. Otherwise Comersus will not remember who they are when they try to retrieve their list.*

## E-mail Settings

Comersus automatically sends your customers e-mail messages under these circumstances:

- When they place an order, to confirm the order.
- When they place an online payment through PayPal, or on-line credit card payments.
- When they forget their login password, to remind them about the password.
- When they win an auction or their bid is surpassed.

The e-mail settings allows you to configure:

- The **E-Mail component** is probably the most important setting in this section. This is what tells Comersus the e-mail program that your Web server is using to send e-mail messages. "CDONTS" is the default setting. CDONTS is a script used by a large number of Web hosting providers to allow Web sites to send e-mail messages to their visitors. Check with your Web hosting provider to find out what application is installed on your Web server to handle e-mail messaging. Other popular applications (COM Objects) used for this purpose are: JMAIL, PersitsASPMail, ServerObjectsASPMail and BambooSmtP. Comersus provides a Free Utility named Diagnostics and Tools to identify the components installed automatically.
- **Admin E-mail:** This is typically the address of the person that is managing the store, or "administrator". This address receives order notifications, payment notifications, encrypted credit card payments and auctions notifications.
- **"From" E-mail:** This is the address that is used for all messages and invoices sent automatically from your store to a customer. This address shows up as the "From" address in the message that the customer receives, and it is therefore also the address that replies will be sent to, if the customer decides to reply to a message.

- **SMTP Server.** This is the send mail transfer protocol server. It can be a remote server also.
- **Debug Email:** This option is useful to determine the cause of email sending errors since it will display the error description on screen.

## Changing Your Password

To change the login password for your BackOffice+ or to add more administrator profiles select *Settings, Administrators*.

Create a new user or modify an existing one. Note that the admin profile that you are using may not have the permissions to modify other profiles.

If for any reason you cannot login to BackOffice+ you can download and install Free Diagnostics and Tools to create a new user admin.

**Note:** Whoever is in possession of the BackOffice +’s User and Password has access to virtually every aspect of your online store. Make sure that you keep your password in a safe place and that you do not share it with anybody other than those people that you want to have full access to your store.

## General Conditions

At checkout time, the customer will have a caption: “You have to agree to the following conditions to make a purchase”. The conditions can be changed from BackOffice+ using this link at Settings Menu.

*Note: If you want to change General Conditions using Back Office Lite you will have to perform a SQL sentence.*

## Currencies

From this option you can create new currencies defining sign, name and conversion factor. If you have the optional Currency Conversion Feature included with some Power Packs your customers will be able to make conversions between currencies in the storefront.

## States and Countries

From this option you can administer the states and countries displayed in your checkout and registration script. If your store only allows purchases from US, you can delete all other countries for example.

Tax, Payment and Shipping are covered in special chapters of this guide.

## StoreFront

---

The *StoreFront* menu allows you to add products to your on-line catalog using a form. It also allows you to modify existing products, add product options (e.g. color and size), add or edit product categories, and more. You can also moderate Customer Reviews, Define Discounts, Distribute a Newsletter, add new records to Dynamic News and create Auctions. You can also manage stock, define Related Products and administer suppliers.

### Getting Ready to Add Products

Before you start adding product information to your on-line catalog, it is a good idea to get the product information ready. Here is a list of the things that you can add to your product catalog, along with some comments related to their formats.

- **Product name, SKU, and a description.** The description field supports HTML tags, so you can use the product description that you have already used in another Web page, by copying and pasting the HTML code. If you don't have a formatted product description, just use plain text, as you will be able to format it using BackOffice+ (e.g. bold, italics, bullets, etc.)
- **Pricing information.** You can set 3 prices for each product: List price, retail price and wholesale price. The only one required by Comersus is "retail price", which may or may not coincide with the list price. If it doesn't, the store will show "you save \$XXX" message.
- **Product images.** You can have 2 images for each product.
  - Thumbnail. This is the small image that typically appears on all pages that display more than one product (e.g. search pages, etc.). The size of this image must be **100 x 100 pixels** or less. The supported formats are JPEG and GIF, which are the standard graphic formats acceptable for the Internet.
  - General Image. This is the image that is displayed on the product details page. The size of this image must be **200 x 200 pixels** or less. The supported formats are JPEG and GIF.
- **Product Categories.** Are your products organized in categories? If not, you may want to consider organizing them in categories before you start adding them to the catalog. Note that Comersus supports multiple subcategories. In other words, you could have "Toys / Babies / Bath Toys" where "Bath Toys" is a subcategory of "Babies", which is a subcategory of "Toys". You can also define an image for each category to make listings

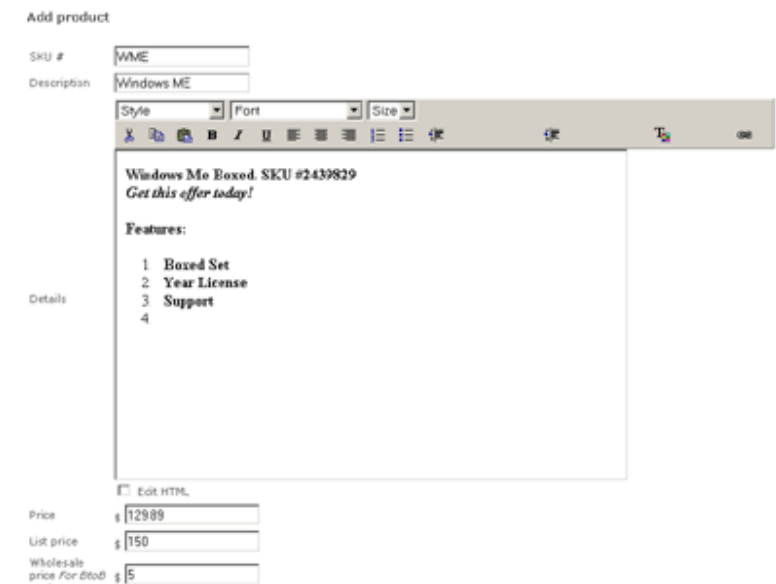
more attractive. You can also include an image for each root category, so you will get a good looking categories page.

- **Product Options.** Do your products come in different sizes, colors, etc.? Have those details available as well. In Comersus, they are called *Product Options*.

## Adding New Products

*Add Product* adds a new product to the product catalog.

The following is a brief description of the form fields contained on the first page.



The screenshot shows the 'Add product' form. It has a 'SKU #' field with 'WME' entered, a 'Description' field with 'Windows ME' entered, and dropdown menus for 'Style', 'Port', and 'Size'. Below these is a large text area for the product description. The description text is: 'Windows Me Boxed. SKU #2439829', 'Get this offer today!', and a list of features: '1. Boxed Set', '2. Year License', '3. Support', and '4'. Below the description area are checkboxes for 'Edit HTML' and 'Edit HTML'. At the bottom are price fields: 'Price' (\$129.99), 'List price' (\$150), 'Wholesale price' (\$5), and 'price for item' (\$5).

- **SKU** - Enter the product SKU or Part Number, which typically is a combination of letters and numbers. Note that the database will also automatically add to each product a unique *Item Number*, which is not displayed on this form. The *Item Number* uniquely identifies the product in Comersus' database. The SKU, instead, is your own product identifier.
- **Product Name** - Enter the product name (Max 255 characters).
- **Description** - Enter a description for the product. This is the description that will be displayed to your store visitors when they opt to receive more details on a certain product. For example, if they run a product search, the shopping cart will return N items on the search results page. If they click on "More Details" next to any of the items, they will be shown a page that displays the product description that you are entering here (together with the *general image* and other product information).

**Note:** You can use any **HTML tag** to format the text in this field. For example, you can use the `<b></b>` tag to make a word bold. This also allows you to link to other pages on your Web site, display additional product images, etc.

- **Retail price** - Enter the price you will be charging your retail customers. You can automatically charge wholesale customers a different price (*see B2B prices below*).
- **List price** - Enter the list price for the product. This is an optional, but very useful field. If you enter a price here, then you can use the *Show Savings* feature described below. Note: make sure the *list price* is higher than the *on-line price*.
- **B2B (Wholesale) Price**: This is also an optional field. The field defines the price that is displayed to B2B wholesale customers and used to calculate their order totals. You can define which store visitors are wholesale customers under Customers Menu. See the section of this user guide dedicated to that topic for more details. B2B wholesale customers are automatically shown the wholesale price.
- **Special Prices**: Since Comersus 4.00 you can also define special prices for each customer. List the customer from Sales and Customers menu and select Assign Special Prices.
- **Thumbnail image** - Enter the thumbnail image file name and extension. Do not enter any directory path, just the file name (e.g. "myimage.gif"). Comersus assumes that images for the product that you are adding have already been uploaded (or will be uploaded) to your server. All images must be uploaded to the following directory:

[www.yourwebsite.com/Comersus/store/catalog](http://www.yourwebsite.com/Comersus/store/catalog)

If you haven't already uploaded images to your server, you can do so by using Comersus' automatic upload component, accessible by selecting *Upload Images* from the *Products* menu.

To upload images using this component, *Browse* your computer until you locate the file(s). When you are done locating the file(s), click on *Upload* to automatically move them to the right directory on your Web server. You will receive a confirmation message indicating that the upload was successful.

To upload images to your server you can also use any **FTP** program. Many are available in the market, often free of charge. In addition, your Web hosting service provider may have some for you to download as well. For a list of good FTP programs available for download, run a search for "ftp" at [http:// www.download.com](http://www.download.com)

- **Image** - Enter the file name for the product's general image. Make sure that the image has been uploaded to your server, as described above.
- **Category 1, 2 and 3** - To give you maximum flexibility, Comersus allows you to assign a product to multiple categories. For example, a gift shop could have the same poster appear under "Posters" (first category) and under "Home Décor" (second category). To manage categories and subcategories, see [Create and Modify Product Categories](#). You can assign the same product to unlimited categories just by making some modifications to BackOffice +. By default it comes with 3 categories since it is unusual to assign one product to more than 3 categories.
- **Active** - All products are active by default. If you uncheck this option, the product becomes inactive, and will not be shown in your store. The product will stop showing up



- in any search and/ or catalog page. Make sure that you have not placed hard-coded links to this particular product on any other page of your Web site.
- **Show In Home and Hot Deals** - You can set any item in your product catalog as a *Show In Home* or *Hot Deals*. This gives you the ability to promote certain products in your on-line store. All *Hot Deals* are displayed in a special page that you can link to from any other page on your Web site. For example, many Web stores link to the *Specials* page right from their home page. Show in Home Products will be shown at `comersus_dynamicindex.asp`
  - **Weight** - Enter the product's weight, in pounds. The weight can be used for dynamically calculating shipping charges. For information about configuring shipping options see [Shipping Options](#). If you set the weight to zero, then customers will not be prompted to select a shipping option during the check out process. This can help you both with items that you do not ship and with those for which you want to offer free shipping.
  - **Stock** - Enter the current stock level for this product. This is an optional field, which can help you manage your inventory. If a product is out of stock and you have selected *Show Out of Stock* then the product details page on your store will display an “Out of stock” message. However, this will not affect your customers' ability to buy the product. In other words, products can be purchased even if their stock level is 0. If you don't want a product to be available for purchase, then uncheck the *Active* option.
  - **Form Quantity** - You can define the quantity to be allowed in the drop down quantity selection of viewitem page.
  - **Availability Time** in the viewitem page you can show the usual Delivering Time for this product.
  - **Digital Goods** You can define a download link, a serial code or any other digital goods text to be distributed automatically with Silent Response from payment gateways. Remember that since Comersus 4.10 you can also use optional Unique Serial Codes that will distribute unlimited serial codes defined previously for each product to be sold. There is also an optional package to distribute digital goods from Customer Menu (Show Order screen) with the advantage that the customer will not find out the real location and name of the file downloaded.

Click on the *Add* button to add the product to your catalog. A confirmation page will be displayed. Then you can opt to add *Options* to your product (discussed in the next section), modify it, add another product, or return to the product management window.

After adding the product in BackOffice+ you can distribute a Newsletter to all the customers with the information about the product just added.

## Setting Product Options (variations)

Comersus allows you to add up to two sets of options to each product. These are additional purchasing options that you are offering to your customers on certain products. For example, a product may be available in different sizes, colors, etc. Customers select these options (if any) on the product details page before adding a product to the shopping cart.

Comersus gives you a great deal of flexibility in creating and managing product options:

- You can add an option to just one product in your catalog or all of them at the same time.
- You have the ability to associate an additional fee with each product option. The fee is automatically added to the product's base price when the product is added to the shopping cart. So an oak frame may cost an additional \$20 for a certain painting, but \$30 for a larger painting. Different sizes on a t-shirt, instead, may not add any amount to the base price.
- You can set an additional option as "required" or not. For example, customers may be required to select the size of a sweater, but not the optional gift wrapping.

Before you add options to your products, take a look at how they are organized in your store's database. Product options work as follows:

- **Option Groups** – Option groups define the main attribute (size, color, weight, etc.).
- **Options** – Options are the choices within that attribute (small, medium, large, etc.). So to assign a product a certain set of additional options (e.g. three sizes), you will first associate the product with an option group (e.g. size), then select three options to add to that group (e.g. small, medium, and large).

To create options and option groups, follow the steps outlined below.

**Create a new Option Group at StoreFront/Products/Option Groups Menu** by typing the group name in the *Group Name* field and then clicking on the *Create New Option Group* button. For example, "color" or "size" could be the name of a new option group. The new entry will not appear in the list.

- From the *StoreFront/ Products* menu, select *Modify OptionGroups to Products Assignments*. The window that is displayed lists the current option groups for the selected product.

## Modifying & Deleting Products

To modify an existing product, click on *Modify Products*. You can locate the product that needs to be modified by searching for it, or by viewing a complete list of the products per category saved in your product catalog. Searches are conducted on the product's name and description.

If you select *list per category*, you will be shown n products per page in order to locate some specific product.

In both cases (search or list all), the results page will list the product SKU, product name, and the following links:

- **Modify** - Click on the *Modify* button to modify the product properties. The form that is loaded is very similar to the [Add New Product](#) form. Refer to that section of this document for more information on each form field.
- **Delete** - Click on the *Delete* button to delete the product from the database. *Note: if you want to prevent the product from being displayed on your on-line store, but you want to keep it in the database, make the product inactive, do not delete it. This allows you to temporarily prevent people from buying an item, but it gives you the ability to make the item available for sale again at any time. Instead,*

*deleted products are permanently removed from the product catalog. Consider that sold products cannot be deleted before deleting order first for integrity reasons.*

## Multilanguage Support

You can also enter all product descriptions, optionals and categories in several languages. To do so first you have to add languages from settings, languages menu. Then you have to modify the product and in product view you can find a link to modify other languages. The same procedure applies to optionals and categories. The language will be changed depending on user selection.

In the BookStore demo store you can find how to define different layouts per language (English/Spanish example). That is important since you also want to change a GIF button ADD TO CART to AGREGAR AL CARRO.

You can find more information about languages schema in Appendix section.

## Creating and Modifying Product Categories

Product categories allow you to organize your product catalog and make it easier for customers to browse through your on-line store. With Comersus you can create multiple categories and subcategories, and assign a product to up to three categories or subcategories. In addition, you can create up to four subcategory levels in the category tree. For example: "greeting cards" (category), "business" (subcategory of "greeting cards"), "thank you cards" (subcategory of "business"), "classic" (subcategory of "thank you cards"), etc.

Note the following definitions to understand how to create a new category:

- **Root.** This is the top level in the category tree. When you create a new category, you will set it as a *Root* category unless you want it to be a subcategory of another category.
- **Categories.** You can have unlimited categories.
- **Parent Category.** This is the category to which a subcategory belongs. When you create a new subcategory, select the category that it belongs to from the *Parent Category* drop down menu. Note that parent categories cannot contain products. Their subcategories can, unless you want them to also be parent categories. Therefore, you will not be able to select a category as a parent category if it contains products.
- **Subcategories.** The process of creating a subcategory is the same as creating a category. The only difference is that you will have to specify which parent category or parent subcategory this subcategory belongs to. Comersus supports up to four category levels.

**To create a new category or subcategory:**

- Click on *StoreFront / Products / Add Category*.
- Enter a category *Description*. This is the category name that will be displayed in your store when people browse the store by category, together with the category image.
- Specify which category this subcategory belongs to from the drop-down menu. If this is a top level category (i.e. this is not a subcategory of any other category), select *Root* from the

drop-down menu. If a category does not appear in the *Parent Category* drop-down menu the reason is that either the category has products assigned to it or it is the lowest level of category that Comersus supports (i.e. it cannot have subcategories).

- Click *Save* to add the category to your store. You may assign products to this category when adding a new product, by using the *Modify Products* feature under *Storefront / Products*.

#### To **modify an existing category or subcategory**:

- Click on *Storefront / Products / Categories / Modify*
- A list of all existing categories and subcategories is displayed. Subcategories are displayed below the parent category to which they belong.
- Select the category that you would like to modify by clicking on *Modify / Delete* on the right side. You will be shown a window identical to the *Add New Category* window discussed earlier in this section.
  - To turn a category into a subcategory, select what will become its parent category from the drop down menu and click *Modify*.
  - To turn a subcategory into a top level category, select *Root* from the drop down menu and click *Modify*
  - To delete a category, click on the *Delete* button. Note that to be able to delete a category, it must not contain any subcategories, and no products can be assigned to it. You will first have to delete its subcategories (or assign them to another category or subcategory), and delete the products that belong to it (or assign them to another category).

## Managing Inventory

Comersus automatically keeps inventory levels updated for you. When you add a new product to your product catalog, you have the ability to specify the initial inventory level. As orders are submitted and paid or marked as paid for a particular product, the inventory level for that product is adjusted accordingly.

Since you may receive new shipments of products, or produce new ones, etc. you need to be able to change the inventory settings at any time. To view and modify inventory levels, select *Storefront / Products / Stock main* menu.

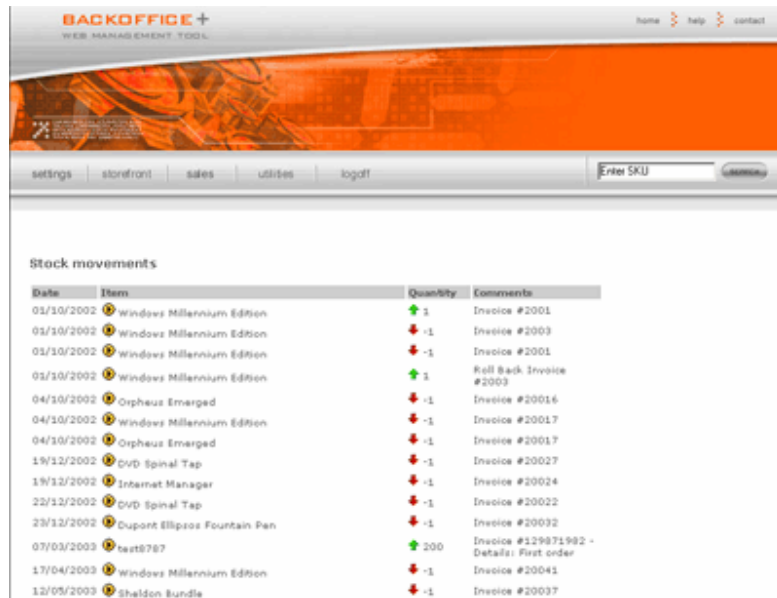
You will be shown several choices to list, view charts and modify the stock of all products in your product catalog

To adjust the stock for some product click on *Modify Stock*.

Regarding the adjustment of stock at purchase time, you have to consider that you should not update stock with each order since it's very common for payments to be rejected and for online orders to remain uncompleted. It's a better schema to update stock only after payment. With

Comersus you can update stock using the Silent Response of your payment gateway. You can also update stock for off line payment orders using BackOffice+ by marking one order as paid, the stock and sales statistics of that product will be updated. If you get a chargeback for one payment you can make a RollBack for the order using the BackOffice and the stock will be updated.

*Note: you can also modify the stock value for a certain product from Modify Product menu but remember that Comersus will not maintain records of this change. We advise always using Modify Stock Option.*



The screenshot shows the 'BACKOFFICE+ WEB MANAGEMENT TOOL' interface. At the top, there are navigation links: 'home', 'help', and 'contact'. Below the header, there is a menu bar with 'settings', 'storefront', 'sales', 'utilities', and 'logout'. A search bar labeled 'Enter SKU' is also present. The main content area displays a table titled 'Stock movements'.

Date	Item	Quantity	Comments
01/10/2002	Windows Millennium Edition	1	Invoice #2001
01/10/2002	Windows Millennium Edition	-1	Invoice #2003
01/10/2002	Windows Millennium Edition	-1	Invoice #2001
01/10/2002	Windows Millennium Edition	1	Roll Back Invoice #2003
04/10/2002	Orpheus Emerged	-1	Invoice #20016
04/10/2002	Windows Millennium Edition	-1	Invoice #20017
04/10/2002	Orpheus Emerged	-1	Invoice #20017
19/12/2002	CD/D Spinal Tap	-1	Invoice #20027
19/12/2002	Internet Manager	-1	Invoice #20024
22/12/2002	CD/D Spinal Tap	-1	Invoice #20022
23/12/2002	Dupont Ellipse Fountain Pen	-1	Invoice #20032
07/03/2003	test8787	200	Invoice #129871982 - Details: First order
17/04/2003	Windows Millennium Edition	-1	Invoice #20041
12/05/2003	Sheldon Bundle	-1	Invoice #20037

## Advanced Stock Calculations

After adding a new product you can enter additional optional fields that will produce advanced stock calculation for report purposes.

*Note: for existing products you can click on Set Stock Levels to enter this information.*

Those fields are:

Security Stock: the minimum stock level that is allowed for that product

Order Cost: global costs involved to re-order that product (shipping, handling, etc)

Delay: days to get that product

Minimum Order: minimum order for that product as it was specified by the supplier.

If you have loaded all these information and if you have at least three months of historic sales in your database you can use the Security Stock Report (Sales & Customers/Reports).

This report will iterate through the entire catalogue and it will show a detailed advanced information about inventory like:

- Current Stock
- A flag to identify if the item is below security level
- Units to get Security Level
- Recent sales of this product
- Simple estimation for next month
- Re-order recommendation including costs and delay times
- Direct link to Supplier Information

## Related Products

You can define related products for one item. This is a great marketing tool since it allows to create a Cross Selling Schema. At product details page you can get related products and show them to the customer so they can decide to purchase those products also. For example: if the customer purchases a radio you can offer batteries as related products.

Related Products are managed from StoreFront/Products/RelatedProducts

## Bundle Products

A Bundle Product is a product made with other products. You may want to use this feature in the following scenario: a clothing company with T-Shirts in different sizes, colors and models with the requirement of maintaining stock for each variation.

You can also use one product with Optionals but in this case you cannot maintain stock for each variation, you cannot run Sales Reports differentiated by variation and you cannot use different images for each variation.

All this problems are now solved by Bundle Products.

Instructions:

1. Create the main product in the usual way, consider that the description and details should be generic to include every product of the bundle (like T-Shirt in several sizes and colors). Price and stock of this product will not be used so you can leave them empty.
2. Create each product contained in this Bundle. Here you have to load price and stock.
3. From Products Menu, Select Main Bundle, select the product just created.
4. Then click on the Assign Products link.
5. Select each one of the products contained in this Bundle.

Each one of the products contained in the Bundle will not appear in the store as individual products (they will not be listed in Searches and Listings). Only the main Bundle Product will appear there. When you click on the details page for the Main Bundle, you will get a compound page with each one of the products contained, the stock, price, images and links to add to the cart

## Rental Products

If you want to rent rooms, DVDs, CDs, etc you have to specify that the item is a rental product. In this case the product cannot be added directly to the cart. The customer will have to select from/until dates. The selection will be compared with current reservations and if the period is not reserved the item can be added to the cart. The price will be calculated as item price \* number of days.

To simplify user selection you can enable Java calendar from BackOffice/Settings/Configuration. In this case two calendars will appear in the screen to select from/until.

Note that current reservation will not be saved until the payment is made and a silent response is posted back to the cart or until the administrator mark the order as paid.

Rental products cannot be recalculated inside the cart since the quantity is determined directly using the period provided.

## Compare prices with Amazon

With this feature enabled Comersus is able to perform a real time comparison with Amazon.com catalogue, if your price is better it will show a message “Better price than Amazon” and a link so the customer is able to verify that information.

*Note: This feature is available only for Books at this time. The script needed for this function is included with Power Pack Premium.*

To configure Compare with Amazon, go to <https://associates.amazon.com/exec/panama/associates/join/developer/application.html>. and get a Token, then go to <https://associates.amazon.com> and get an associate ID. Enter your Developer Token and Associate ID in Comersus BackOffice Settings/ Configuration inside pAmazonDevKey and pAmazonAssociateKey and enable pCompareWithAmazon.

Edit all the books in your store and enter the ISBN inside Comersus sku field. Then you can load the details page for a specific item and show to final customers if your prices are lower than Amazon prices.

## Suppliers

You can manage suppliers from StoreFront/Products/Suppliers menu. There you can add and modify suppliers and you can also view a Report of products ordered by Supplier and a chart of products quantity per supplier.

Suppliers are important since Comersus may also send email notifications to one supplier when the stock is less than a certain value. You can make an automatic procedure of new orders with your suppliers using Comersus.

Note that this Supplier Notification feature is originated from Silent Response notifications of Payment Gateways or from BackOffice+ (changing order status to paid).

## Moderating Reviews

You can moderate customer Reviews from the BackOffice. Reviews are not activated by default in order to avoid rude or offensive messages. Then you can login into the BackOffice and delete or activate Reviews.

## Newsletter

From this option you can distribute a Newsletter to your users. As an incentive, the Newsletter Package may be configured to distribute Discount Certificates so you will get a lot of users in your Newsletter quickly.

From this option you can distribute to Regular Retail/Wholesale Customers or to the users subscribed to the Newsletter. You can define From, Email, Subject and Body.

By default, Newsletter emails are text only emails but you can develop a customization to allow HTML emails also.

*Discounts are explained in a special Discounts and Promotions chapter.*

## News Page

From this option you can add records to the Dynamic Store Newspage such as Blow Out Sale Notifications and more.

## Auctions

With Comersus you can define Auctions using your standard catalog. You can define an auction name, the valid period, the starting and ending price, the customer bid increment and the customer auction type (Retail/Wholesale)

Using BackOffice you can view current offers, delete bids, change the ending time, etc.



When you create a new Auction, your customers will see a message in the product details page: “Auctions available for this product”.

Only registered customers can bid for auctions. If a customer surpasses someone else’s bid, the previous customer will receive a notification of bid surpassed.

If a customer wins the auction, they will receive by email a discount certificate calculated automatically with the following rule:

$\text{Discount Amount} = \text{Price (Retail or Wholesale)} - \text{Last Offer}$

At a later time, the customer may return to the store and post a new order with the discount certificate won in the auction.

The auction could be finished due to a bid equal to final price or due to final date reached. Final date is computed each time a user views an auction. If you need another method you can execute at regular intervals the script `comersus_optAuctionExpirationCheck.asp` using WSH or any other facility provided by the web server.

## Wish List

With Comersus customers can save certain items in their Wish List. They will obtain a private link to distribute the Wish List to their friends. Any visitor of the Wish List can place an order for Wish List products. In this case the destination address will be automatically loaded with Wish List owner address and it cannot be modified. After placing an order the item will be removed from the Wish List.

To enable the Wish List feature just go to BackOffice/Settings/Configuration and change `pWishList` to -1

## Google Ad-Sense

You can earn money by showing ads in your site. Comersus is compatible with Google Ad-Sense. A dynamic Ad-Sense banner will appear inside `comersus_viewItem.asp` script if you configure this feature.

Instructions:

1. Sign-Up and login into your Google Ad Sense account
2. Go to Settings, Ad Layout Code
3. Retrieve your ad client code in the second line, example: `pub-1234296487474744`
4. Enter that code inside BackOffice/Settings/Configuration `pAdSenseClient` key

## Template Store

You can install a template store with Comersus. What is the difference with a regular digital goods store?

1. Each item has 2 prices: a regular price and a buyout price
2. If the customer purchases the item at buyout price the item is removed from the store
3. If the customer purchases the item at regular price, the item price is decreased
4. The store will display to final customers previous sales

Installation instructions:

1. Make sure that you have Power Pack Premium
2. Copy Comersus\_optTemplateViewItem.asp into Comersus/store folder
3. Go to BackOffice/Settings/Configuration and enable pTemplateStore (switch to -1)
4. Edit all items and define regular price in price field and buyout price in listPrice field
5. Make sure that you are using an online payment gateway with Silent Response enabled since this feature will only work with automatic notification from payment gateway

## Discounts and Promotions

---

Managing an on-line store is no different than running a retail shop. Through special promotions and discounts you can increase sales for certain items and draw your customers' attention to specific products. Comersus gives you the ability to easily set up a variety of promotions and discounts. First, we'll look at how Comersus can help you automatically create "Hot Deals" and "Show in Home" items. Then, we'll focus on product discounts.

### Specials and Featured Items

Comersus allows you to increase the visibility of certain products in your on-line store in two ways: by creating *Hot Deals* and by setting certain products as "Show in Home" like featured items.

### Discount by Code

Comersus allows you to set a variety of discounts. We will start by describing the *Discount by Code*. This discount works as follows:

- When you create a discount, you will assign a code to it.
- Then, you will notify your customers about it (through e-mail, your Web site, flyers, advertising, or any other way).
- When customers visit your on-line store, they will add products to their shopping cart as usual. No discount will be shown at that time. Upon check out, they will be prompted to enter the discount code, if they have one. The order verification page will display the savings.

To create a *Discount by Code*, select that link from the Storefront / Discounts menu. A list of existing discounts will be displayed. To create a new *Discount by Code*, click on *Add new discount*. To edit an existing discount, click on the *Modify* button. To delete an existing discount, click on the *Delete* button.

To create a new discount, fill out the form shown below and click on *Save*. The following is a brief description of the form fields and how they affect your customers' orders.

- **Description.** Enter a description for this discount, e.g. "Thanksgiving Sale".

- **Price Discount.** If you wish to set the discount as a flat dollar amount, enter it here, without the dollar sign. For example, you could give your customers \$10 off the total of an order. This type of discount is often associated to a minimum purchase amount, which you can specify below under *Order Amount*.
- **Percent Discount.** If you wish to set the discount as a percentage of the order total, enter the percentage value here, without the % sign.
- **Active.** To disable or enable a discount, use this option. This allows you to create a discount code, but use it at a later point.
- **One Time.** If you want to allow your customers to be able to only use the discount code once, make sure this option is checked. For example, this is typically the case with Gift Certificates: once a customer uses the gift certificate, the same customer cannot use it again.
- **Discount Parameters.** These parameters limit the applicability of the discount. Note that you do not need to specify any of these parameters, unless you want to.
  - **Quantity.** You can limit the validity of the discount to orders that fall within a certain quantity range (e.g. higher than 3, or between 5 and 10, etc.).
  - **Weight.** Same as for quantity, but calculated on the total weight of the order.
  - **Order Amount.** Here the parameter is the total order amount. Typically, you would set a minimum dollar amount for the purchase and any order under the minimum dollar amount would not receive the discount.
- **Discount Code.** Enter the code that your customers must use to obtain the discount. The code is entered by customers on the checkout page.

*Discounts by Code* allows you to implement a variety of scenarios, such as Coupons, Gift Certificates, Corporate Discounts, etc. For example:

- You can send a \$10 **Gift Certificate** to all customers that have purchased more than \$100 in the last year to encourage them to purchase again. You can obtain the list of customers that meet that requirement from the *Reports* module. Then you would create a \$10 discount, with expiration after the first use, generate a code, and e-mail it to them.
- You could reward customers that spend more than \$50 at your store by granting them a **10% discount** on the purchase. The discount code in this scenario could be advertised right on your store's home page to motivate customers to place orders that exceed the amount set in the discount settings.
- **Corporate Discount.** Everyone that works at Company X gets 10% off. You could mail a discount certificate to the Human Resources department of that company and ask them to let all the employees know about it.
- **Repeat Customers.** You make the discount code part of the confirmation e-mail that is sent to your customers (after their order is submitted), advertising that they'll receive \$10 off the next order from your store.

## Discount by Quantity

Comersus allows you to associate tiered prices with any of your products. In other words, you can charge your customers different prices for different quantity levels. The price can also vary depending on whether the buyer is a retail or wholesale customer. You can create unlimited discounts levels for each product in your product catalog.

To apply quantity-based discounts to a product, select *Storefront / Discounts / Add Discount Per Quantity* from the navigation menu. Next, locate the product that you would like to apply quantity discounts to.

To modify previously created discounts you can list all discounts per quantity at once from the listing option.

The quantity discount that will be applied to the product can be:

- a dollar amount off the "on-line price" (e.g. \$10 off the on-line price)

Therefore, first select the type of discount that you would like to apply. Then, enter the "from" and "to" quantity values (up to 5 tiers). Finally, specify the discount value, for retail and/or for wholesale customers.

This feature gives you the ability to charge a lower price as the quantities go up, both with your retail and wholesale customers. The right price is automatically calculated when the product is added to the shopping cart. If a customer changes the quantity for the product and presses the *Recalculate* button, the correct price is once again located and used to calculate the total for the order.

### Example - Dollar Amount

Let's assume that you have an on-line wine store and that you sell a certain bottle of wine for \$20 (the *on-line price*). You may want to reward customers that buy the wine in large quantity. So you could set a dollar amount discount of \$1 for people that buy from 5 to 10 bottles, \$2 for customers that buy from 11 to 25 bottles, and so on. Let's also assume that your resellers buy the same wine at a wholesale price of \$14 per bottle. You could give them a \$0.50 discount if they buy from 5 to 10 bottles, \$1.50 if they buy from 11 to 25 bottles, and so on.

### Example - Percentage

Let's again assume that the on-line price for the same bottle of wine is \$20. This time you could set the discount as a percentage of the on-line price. So you could set a 5% discount for people that buy from 5 to 10 bottles (*which in this case translates to a discount of \$1*), 10% for customers that buy from 11 to 25 bottles (*which in this case translates to a discount of \$2*), and so on.

**Note:** Applying percentage discounts allows you to keep the discount proportionally consistent even if you change the on-line price. For example, if the price for that bottle of wine went down to \$15, the discount for an order of 5 to 10 units would automatically go down to  $5\% * \$15 = \$0.75$ . On the contrary, the discount would remain \$1 (*which translates to a discount of 6.6%*) had you set it up as a dollar amount.

## Discount per customer (special prices)

You can also define a special price for certain products and certain customers. List the customer, then click on Assign Special Price. The customer should authenticate in order to obtain the special price.

Special prices override Wholesale and Retail prices.

## Newsletter, Offer Box and Auctions

There are other packages that create automatic discounts. 1- Newsletter: to encourage the email subscription the Newsletter Package can be configured to generate discount codes automatically. 2- Offer Box: this treasure box appears when the customer is logged in, then it will rotate Hot Deals with a predefined discount percentage and finally it will create a discount code valid for selected products. 3- Auctions: when a customer wins an Auction they will receive by email a discount code to be used.

## Shipping Options

---

Comersus allows you to set flexible shipping options by dynamically connecting to the following shipping providers: UPS, US Postal Service, FedEx and Canada Post. Shipping costs are calculated in real time based on the shipping address and the order weight. You can also set shipping using dynamic rules depending on customer cart contents and delivery region. The shipping options you define will be available to your customers during the checkout process.

### Adding a New Shipping Option

To configure non-real time shipping options, click on *Settings / Shipping Options* on the navigation menu, and *Add New Shipping Option*.

In this screen you can select the shipping method name, the percentage amount, the fixed amount, handling charges and the rules when this shipping method will be used based on location, weight, cart contents, etc

### Defining shipping by customer type

You can define that one shipping method is valid for certain customer types (Retail, Wholesale, etc.) or that one shipping method is valid for all of them.

### Viewing/Modifying Options for non-real time shipping

To view or modify the shipping options that are currently active on your store, select *View/Modify Options* from the *Shipping Options* menu. A list of the active domestic and international shipping providers will be displayed.

- To remove a shipping option, click on *Delete*

### Real Time Shipping (UPS, USPS, Canada Post, Fedex)

To configure Real Time shipping options you will need Power Pack Premium installed. Then you will need to configure Real Time Shipping in the Configuration section of your BackOffice in order to indicate that you will use Real Time Shipping.

You cannot mix off line shipping and online shipping. Only one method can be used. And you cannot mix two or more companies since your store has to connect with a remote server to get real time quotes and with more than one server it will take a lot of time to retrieve quotes.

*Note: you can request a customization if you need the ability to mix Real Time Quotation from different companies.*

The shipping costs shown are dynamically calculated based on the total weight of the order and the shipping address provided by the customer. You have to verify that your address is correct since the quoting will be calculated taking your company address as the origin of the delivery.

**UPS instructions:** 1- Select this method in pRealTimeShipping setting. 2- Define pUpsDefaultFee just in case your server cannot temporarily communicate with UPS.com 3- Make sure that all your products have weight defined in lbs 4- Ask your hosting provider if you can use Microsoft.XMLHTTP component (installed by default in IIS 5) or the free component ASPTear (in this case you have to change pUpsComponent constant inside comersus\_optSelectUPSShipment..asp) 5- Consider that some UPS services have a limit of 150lbs and if the total order weight is more than 150 your calculation cannot be retrieved for that service type 6- If you get a huge shipping amount try to change pChangeDecimalPoint in Configuration to reformat the value obtained.

**USPS instructions:** 1- USPS can be only used for US destinations at this time 2- Register at <http://www.shippingapis.com> and ask the switch to production server 3- Use pounds as weight unit for all the products 4- Define pUSPSDefaultFee just in case your server cannot temporarily retrieve quotes from USPS 5- Ask USPS about min/ max weights for each service type 6- Use the same consideration as for UPS regarding XML and ASPTear components 7- Open comersus\_optSelectUSPSShipment.asp with a text editor and replace your user and password at USERID=""yourUserHere"" PASSWORD=""yourPassHere"".

**Canada Post instructions:** 1- Register at <http://www.canadapost.ca> to obtain a merchant ID and password and request the production server configuration for your account. 2- Open comersus\_optSelectCaShipment.asp with a text editor and enter your merchant inside pRealTimeCanadaMerchant variable 3- Open BackOffice Configuration and set Real Time Shipping to CA 4- Make sure that all your product weights are expressed in KG and that your company Zip is correct.

**Fedex instructions:** First of all consider that you will have to install Fedex software into your server. If you have a hosting service you may not be able to do so.

1. Register at [www.fedex.com](http://www.fedex.com) in order to obtain an Account Number 2. Register at [www.fedex.com/globaldeveloper/shipapi](http://www.fedex.com/globaldeveloper/shipapi) to download the software 3. Install the software according to Fedex documentation 4. Write an e-mail to [websupport@fedex.com](mailto:websupport@fedex.com) and ask for the account activation 5. Wait for their email and then wait 24 hours to start using the account number 6. Open the file trans.in included inside VBS example of Fedex and add this line:

```
3003:0,"211"1,"1st transaction to FedEx!"4003,"Your Name"4007,"Your Company"4011"Your City"4008,"Your Address"4015,"Your Phone"4012"Your State Code"10,"Your Account Number"4013,"Your ZIP code"4014,"Your Country Code"99,""
```

6. Execute vbssample.asp and write down the response obtained from Fedex (Meter Number) 7. Enter your Meter Number and Account Number inside BackOffice+ Configuration 8. Select Fedex as the real time 9. If you cannot get quotes, switch your store to demo mode and view the error messages obtained.



## InterShipper (UPS, USPS, Fedex and DHL)

Comersus is also compatible with InterShipper Service. You can signup for this service at

<https://www.intershipper.com/Shipping/InterShipper/Website/MainPage.jsp?Page=Signup1&InterShipperID=26637>

There are pros and cons if you decide to use InterShipper. Pros: you can mix different shipment companies (DHL, UPS, etc) without losing performance in the quoting procedure. Cons: you have to pay for this middle company service while you don't have to pay if you are using the Real Time forms directly connected with each shipment company.

Instructions for InterShipper:

1. Sing up for the service.
2. Load your InterShipper ID and password at pIsUsername and pIsPassword. Keys of Comersus Configuration.
3. Copy the script Comersus\_optSelectIsShipment.asp into Comersus/store folder (and make sure that you have the Power Pack that includes this shipment form).

## Bypassing Shipping Calculations

If you sell software, music or services you don't need shipping calculations. Comersus includes a setting to completely bypass shipping related screens.

Go to BackOffice/Settings/Configuration and change pByPassShipping to -1

## Volume Calculation

Comersus is able to calculate the volume of the shipping package using the following method:

1. Consider the maximum height
2. Consider the maximum length
3. Sum the weights of each package
4. Add an inter-weight value

This method is not the best calculation but it will provide an approximate volume to make more advanced shipping calculations than if you only have the weight of the package.

The volume will be shown inside order details of BackOffice+ and it can be passed to online shipping calculations. In Comersus 5.10 InterShipper method obtains the volume calculation from Comersus.

## Payment Options

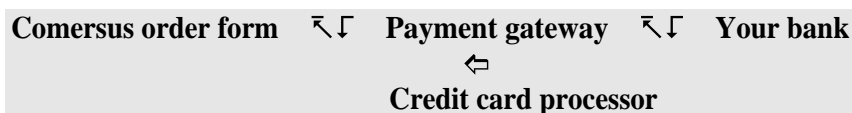
---

The *Payment Options* module allows you to define how customers will be able to pay for an order. You can offer one or more payment options. Comersus allows you to define a variety of real time and non-real time payment methods. Real time payment methods (e.g. credit card) lead to monetary transactions that are processed immediately: if the transaction goes through successfully (e.g. the credit card is approved), then the order is processed; otherwise the customer is asked to provide different billing information. Non-real time payment methods (e.g. COD - cash on delivery) lead to transactions that are processed at a later time. The order is processed immediately, but money is collected later.

With Comersus you can accept **credit cards** on your store by setting up either a real time or a non-real time payment option. The following is a brief overview about real time credit card processing on the Internet.

### About Real Time Credit Card Processing

When credit cards are processed in real time on the Internet, credit card information provided by the customer during the checkout process is typically passed to a service called "payment gateway". Payment gateways connect the online store with a credit card processor, on one side, and with your bank on the other side.



There are a number of payment gateways that offer a different array of services. One of the most important things to look for in a payment gateway is whether or not the payment gateway allows you access to a secured area where you can manually refund previously processed credit card transactions. This will help you in handling returns on your store.

To process credit cards in real time you will need:

- A business bank account
- A credit card merchant account. Your bank or the gateway that you sign up with will help you get a merchant account. Note that credit card companies often handle online and offline credit card processing accounts separately. So even if you already have a merchant account that, for instance, is being used to process credit cards at your retail location, you may have to apply for an additional merchant account.

- An account with a payment gateway. Some credit card processors also act as a payment gateway, in which case you would not be required to take this further step. *CardService International*, a large credit card processor, is one of them (their gateway is called *LinkPoint*).

To use a payment gateway, you need to separately set up an account with one. Make sure that you create an account with a payment gateway that your bank can work with. Start by contacting your bank to find out what payment gateways they support. When you do so, keep in mind that Comersus supports the following payment gateways:

- Authorize.Net (SIM)
- Ka Chinnng
- LinkPoint (CardService International's gateway)
- UTCI
- VeriSign
- IntelliPay
- National Secure
- UsaEPay
- 2CheckOut
- GoEMerchant
- RoboCharge
- PayByCheck
- QuickCommercePro
- Yahoo PayDirect
- CyberCash
- Planet Payment
- WorldPay
- Transaction Central
- SecureTrading
- Protx
- IonGate
- SecPay
- Velocity Pay
- Bank of America
- White Label
- PlugNPay
- SkipJack
- Wells Fargo

- BeanStream
- Moneris
- Viborgnet
- Echonline
- PaySystems
- MoneyBookers
- EPDQ
- AsiaDebit PayZip

And many more, view the complete listing of gateways at <http://www.comersus.com/store>

Additional payment gateways can be added to Comersus for a fee. Contact us for more information. Check out features page at [www.comersus.com](http://www.comersus.com) to find an updated list of payment gateways supported.

**Note:** Typically, payment gateways provide merchants with an administration tool to view past transactions, process refunds, add new charges to a credit card account, etc. Inquire your payment gateway about such a service.

**Note:** When a payment gateway is involved in a credit card transaction, Comersus does not keep credit card information for that transaction in your store's database. The payment gateway does. This ensures added security as payment gateways have highly secure servers.

## About PayPal Payments

Comersus allows you to use another type of real time payment through the PayPal network. You can set up PayPal as the only payment method, or in conjunction with other payment methods to provide your customers with multiple payment options.

The advantage of using PayPal, as the store owner, is that you can process payments instantly, but without having to sign up for a merchant and a gateway account as described above. In fact, with PayPal you don't even need a business bank account, as PayPal accounts can be linked to personal bank accounts. As a store visitor, the advantage of using PayPal is also that you don't need to have or use a credit card to place an order.

In a nutshell, PayPal allows people to securely exchange payments online via e-mail.

The company works as a clearing house between sender (your store customers) and receiver (you). Both sender and receiver open an account with PayPal. At any time they can deposit and withdraw money from that account by linking it to their bank account or to a credit card.

The sender can submit a payment to the receiver by logging into the PayPal network and simply specifying the receiver's e-mail address. In the case of your store's transactions, customers that select PayPal as the payment option will be automatically prompted to log into the PayPal network, and send money to your e-mail account (i.e. your PayPal account).

When the receiver (you) gets the message and accepts it, money is transferred from the sender's PayPal account to the receiver's account.

To become more familiar with PayPal or set up an account, visit the company's web site at [http:// www.paypal.com](http://www.paypal.com)

**Note:** When an order is placed on your store using PayPal, Comersus will label the order as "Pending". That is because payment confirmation is not immediate. If you have configured PayPal IPN feature the order will be marked as Paid as soon as the funds are received in real time.

**Note:** If PayPal is the only payment option that you allow, and a customer doesn't already have a PayPal account, they will have to go through the PayPal account registration process before they can buy your products. Registering a new PayPal account only takes a couple of minutes, but you should keep in mind that there will be this extra step for your customers to take.

## Adding a Payment Option

To add a payment option, select *Add New Option* from the *Settings / Payment* menu. The following screen will be displayed.

As mentioned earlier in this chapter, payment options can be divided into two categories:

- **Real time** Funds will be automatically collected online and deposited in your bank (or PayPal) account. This is where you can set up payment options such as online credit card processing and PayPal.
- **Non-real time** (or offline). Funds will be collected offline, after an order has been placed. This is where you can set up payment options such as offline credit card processing, payment terms (Net 30, Net 60, etc.), cash on delivery (COD), etc.

**Note:** To process credit cards offline you will still need a business bank account and a credit card merchant account, but you will not need to use a gateway since transactions are processed manually, offline. This may be a good option, for example, if you do not expect many online orders per day, and you already have a retail store with a POS credit card terminal.



## Configuring a Real Time Payment Option

To add a new **real time** payment option make sure that you load redirectionUrl with the URL of the payment form.

To configure a real time payment option, you will need the gateway (or PayPal) account number, plus other information specific to each gateway. Once you provide the information requested by Comersus, your shopping cart will be automatically integrated with the selected gateway.

**Note:** To test a real time credit card processing option on your store, you should submit an order using credit card information that is valid, but not real. This is what some payment gateways call a "dummy" account. The transaction is real (so you can test the system), but no credit card is actually charged. Most payment gateways will provide you with dummy account information for testing purposes. Others will allow you to set your account in testing mode, at which time you can use any credit card number, without actually being charged.

To configure **PayPal**, all you need to provide is the e-mail address used for your PayPal account. The rest of the information is already provided by Comersus.

## Configuring Offline Credit Card Processing

To add a new **non-real time** payment option make sure that you enter all the information regarding the payment in the email text field. That information will be sent along with order confirmation to the customer.

Because there is no gateway involved, setting up a non real-time payment option is easy.

To configure **offline credit card processing**, simply define the URL of the Off Line Payment form. When customers check out, credit card information will be collected, but the card will not be charged. To avoid orders submitted with false credit card information, Comersus will do a basic check on the credit card number before allowing the order to go through. If the number is incorrect, customers will receive an error message. If the number is a valid credit card number, then the order will go through.

Comersus, as always, will send you a confirmation e-mail once the order has been placed. It will then be up to you to charge the credit card offline, using a POS terminal, software that may be installed on your PC, or any other solution that you may be using. For security reasons, credit card information will not be included in the order confirmation e-mail. To retrieve such information, you will have to use the *Sales Menu / Show Order* component of the Comersus BackOffice +. See the [Managing Your Orders](#) section of this document for more information.

**Note:** All credit card information collected from your customers during non-real time credit card transactions is stored in the store database in an encrypted format to ensure data security.

## Defining payment by customer type

You can define that one payment is valid for certain customer types (Retail, Wholesale, etc) or that one payment type is valid for all of them.

## Modifying a Payment Option

To modify an existing payment option select *Settings / Payment / Modify*. You will be shown a list of the payment options that are currently active. Click on the *Modify* button to edit an option.

## Delayed Payments

With an optional feature included with Power Packs customers are able to post payments at a later time. This is useful if the connection is broken for any reason after the order was saved but before payment is posted. This is a common situation with an overloaded payment gateway. With this feature your customers will not have to re-post the order. The link to post payments for pending orders will appear inside customer's menu.

This feature can also be used for Recurring Billing since orders are created but payment must be posted by the customer for these new orders.

This utility will determine all available payment methods and it will show a drop down list so the customer is able to select which payment method to use (online credit cards, checks, wire, etc)

## Phone Payments

What if you have customers that don't want to post their credit card information using the Internet? Don't worry, Comersus is able to capture credit card payments using an automatic phone system like big service companies do.

How does it work? First of all verify that you have the extension named Comersus Phone Payment. Consider also that this application is an EXE program and you will not be able to install the system in a shared hosting service.

Requirements: Voice Modem TAPI and DTMF compliant installed in the Phone Payment machine (could be the same box that runs the web server), the ability to install an EXE file in that box.

Instructions:

1. Install the Voice Modem and connect the phone line cable to the external phone line used to get payments.
2. Install the software SETUP.EXE.
3. Run Phone Payment application.
4. Select Modem Configuration and choose the modem from the list.

5. Make sure that the database string is correct and try the TEST Button.
6. Call from an outside line and try to post the payment for an existing order.

The system will ask for a valid order number, then it will ask for credit card number and expiration. The information entered will be stored in Comersus database, inside creditCards table using encryption. The store administrator can retrieve that information from BackOffice+.

*Note: the application is compatible with RC4 encryption at this time.*

You can add a new payment method named Phone Payment with instructions like the number to call, hours, time limit to post the payment, etc.



## Tax Options

---

In the United States, taxation on online sales is typically handled as follows: orders submitted by customers that reside in the same state where the company managing the online store is located are taxed; orders submitted by out-of-state customers are not taxed (this includes international customers). Comersus also supports country-based taxation for international stores.

### Adding a New Tax Rate by Region

To add a tax rule that applies taxes to an order based on the location where the customer resides, click on *Store Settings / Taxes / Tax per place*. Set the tax rate (to add a 6.5% tax rate, enter 0.065), and define the geographic limitation by selecting a zip code, or a state and how that rule will apply: `countryCode=US` and `countryCodeEq=-1` means that the rule will be calculated for the US. `countryCode=US` and `countryCodeEq=0` means that the rule will not be calculated for the US.

### Viewing/Modifying Tax Rates by Region

Click on *View/Modify Tax Rates* to display a list of all tax rules currently active in your store. To modify any of them, click on the *Modify* button. To delete a tax rule, click on the *Delete* button. To add a new tax rule, click on *Add New*.

### Adding a New Tax Rate by Product

You can also define special taxes by region for some specific products. To do so click on *Store Settings / Taxes / Tax per product* (Add and modify)

## Sales and Customers

---

This section includes everything related to Sales and Customers such as viewing information about your customers, changing the customer type from *retail* B2C to *wholesale* B2B (which affects how much they are charged when they order products from your store), e-mailing a customer, adding a new customer to the database, viewing reports and charts, creating affiliates and more.

### Viewing Customer Information

To locate a specific customer, you can search using the customer name. Or you can browse all registered customers by clicking on *Sales / Customers / List All*.

When you find the customer you were looking for, click on the *Modify* button to view customer details, change the customer type from retail to wholesale (or vice versa), or delete the customer from the database.

**Note:** Be careful when using the *Delete* function. If you delete a customer, all orders placed by that customer will also be deleted. Generally speaking, you should not delete customers from the database if they ever placed an order.

As mentioned above, this is also the area where you can change the customer type from *Retail*, which is the default setting, to *Wholesale*. There are many settings in your Web store that work differently depending on the customer type. Here is a list of them:

- Retail customers are shown and charged the *online price*. Wholesale customers are shown and charged the *wholesale price*. You define the two prices when you add or modify a product using the [Manage Products](#) menu.
- [Quantity discounts](#) can be different for wholesale customers. These are the price breaks that you may offer to customers that order large quantities of a certain product. To configure quantity discounts, select *Discount by Qty* under *Storefront / Discounts*.
- [Payment options](#) can be set differently for wholesale customers. This feature, for instance, allows you to grant wholesale customers special payment terms (such as Net 30) that retail customers do not receive. To configure payment terms and assign them to wholesale customers only, select *Add New Option* from the *Payment Options* menu, and then *Non-Retail Time Payment Options*. When you add the new option, make sure to check *Apply to wholesale customers only*.

## Adding a New Customer

The ability to add a new customer right from your BackOffice+ may come of use to you especially if you deal with resellers (wholesale customers). Indeed, you can make it even easier for your resellers to use your online store, by using this feature to register them in advance with your store. You can then e-mail them their user name and password, and a link to your storefront.

When they place an order, they will not have to register with the store, as their account has already been set up. All they will have to do is log in with the user name and password that you provided, and contact, billing, and shipping information will already be there.

**Note:** If you set up a new customer, remember to provide him/ her with the log-in information that you created (user name & password). The customer's e-mail address is the user name.

**Note:** For security purposes, billing information such as credit card details are not kept in the customer database unless you are using Off Line Credit Card option. The drawback is that customers will have to re-enter their credit card information (if that is the payment option of choice) the next time they place an order.

## Orders

You can locate one specific order with the order number, list all orders or list orders by status.

Once you have selected one order you can view all the details of that order such as Date, Total, Tax, Shipping Details, Products, etc

You can also add information about the Shipping Tracking like date shipped, UPS, USPS, FedEx tracking numbers and any other information about shipping. This information will be available from Order Tracking listing to the final customer. Shipping Tracking can be updated using BackOffice +, included with Power Pack Medium and Premium. An e-mail will be sent to the customer with tracking information and the order will be marked as Delivered.

One of the most important functions of the Order Display is the ability to change the status of the order. By default all orders are stored as Pending. Once the payment is submitted, the status may change automatically with a Silent Response from the payment gateway.

You can view other topics about Silent Response Configuration. Remember that not all payment gateways have this feature and that you will need to define the URL of the Silent Response script in the control panel provided by the payment gateway.

If your Payment Gateway has no Silent Response functionality you can still use the BackOffice to mark orders as paid. Marking an order as paid will:

1. Decrease the stock

2. Increase the sales for that product
3. Distribute Serial Codes or Digital Goods
4. Assign the authorization code to the order

You can also change the status of the order for off line payments like Checks, Wire Transfers or for Off Line Credit Cards (where you will process the credit card payment using a manual method).

From Order Display you can also Roll Back a paid order so the stock and sales are rolled back. You can also mark the order as Cancelled or even delete the entire order.

## Adding custom fields

You can add up to three custom fields to each order. You can use these fields for information like: date to receive the order, where did you hear about us, etc

Instructions:

1. Go to BackOffice/Settings/Configuration
2. Enter the field label for orderFieldName1 orderFieldName2 and orderFieldName3

## Managing Your Orders

To understand how the *Manage Orders* component of Comersus works, let us first summarize how orders are handled by your store.

Status	Id	Previous status	Comments
Pending	1	N/A	At first all orders will be saved as Pending.
Paid	4	1	An order can be marked as Paid by the Silent Response of the Payment Gateway or manually using the BackOffice.
Delivered	2	4	When you enter the tracking information, the order will be marked as Delivered and an e-mail will be sent to the customer with Tracking Information.
Cancelled	3	1, 2, 4	Cancel an order if you receive invalid orders and you don't want to remove the records related to the order. Cancelled orders will not be considered for reports and charts.
ChargeBack	5	4, 2	If you receive a Chargeback for one payment

			you can use this option .An e-mail will be sent to the customer so they can repost the payment or contact the store administrator.
Refunded	5	4,2	Use this option to reflect a Refund. Stock and Sales will be updated and the amount refunded will be deducted from order total.

## How to Locate an Order

To search for a particular order, view information about it, change order status, or cancel an order, you will use the *Sales/ Orders/ Locate* component of Comersus BackOffice +.

In the main menu, Comersus lists a summary of orders received that day, and in Sales Menu *View All Orders* button allows you to view all orders that were ever placed on your store (you can then sort them by date or order status).

By clicking on an order, you will load a page containing details on the order itself, the customer that submitted it, the payment option, and the order status. You can then modify the order status., shipment tracking and Transaction Results. To change the order status, simply click on the *Update Order Status* button or use the specific boxes for Shipment, Refund, Transaction Results, etc.

You can also *Cancel* an order using this window. When you do so, the order is no longer computed in your sales or order reports, but it is not actually deleted from the database. You can reinstate the order at any time (for example if you do receive a late payment).

You can also use Roll Back option to make a reverse in stock, sales, etc.

**Note:** When you cancel an order that was submitted using a real-time credit card payment option, the payment is not refunded. To refund the amount, you will have to contact your payment gateway or use the online administration tools that most payment gateways provide.

Comersus provides a number of ways to locate an order that was placed on your store, such as list per status, list all, list per customer, locate one.

20048, Date 10/6/2003, Posted from IP: 127.0.0.1

Name	John Smith, Jr. <i>Block last name</i>
Email	test@comersus.com <i>Block email</i>
Vat Number	N/A
Phone	(305) 735-8008
Address	8345 NW 66TH ST #3537 (90210) CA - Los Angeles US
Shipping Address	(Same as billing address)
Details	3x #SPTDV/2 DVD Spinal Tap Options: = \$96.00
Shipment	FedEx Priority \$34.67
Shipment Tracking	UPS 23782437875
Payment	Credit Card
Authorization code	AH876183
Discounts	- \$0.00
Status	Paid
Tax Amount	\$12.05
Total	\$142.72
Recurring billing	None Next Billing 10/6/2003
Change Status	Select
Delete	Delete order (!) Warning: you cannot undo this action.
Roll-Back	Roll Back order This option will cancel the order and update sales and stock
Refund	\$0.00 This option will change status, update stock/sales/total and it will send an email to the customer.

## How to Charge Off-line Credit Card Transactions

For more information about off-line credit card transactions, see that section under *Payment Options*. This chapter assumes that your store uses offline credit card transactions as a payment option and focuses on how to process those orders.

As mentioned above, all offline credit card orders are labelled *Pending* by Comersus as you have not yet received payment for them. After locating a pending order paid with off line credit card, click on the *Change status* button. The credit card information can be viewed with the link provided in Show Order view. You can now charge the credit card using your POS terminal, software that may be installed on your PC, or any other system.

When the transaction is approved, you can change the status of the order from *Pending* to *Paid*. The order can now be packaged and shipped. When you do ship it, add shipping details to the same order details page, and update the order status to *Delivered*. This will not only keep your store's BackOffice+ updated, but also update the customer service area of your store, which provides customers with updated information on their orders. See *Chapter 12* for more information.

(!) Since Comersus 4.20 you can also store the Transaction Results for payments such as Authorization Numbers and you can also store the Tracking Number for Shipments. The customer may retrieve this information using Customer Menu, Order Tracking.

To ensure data security, all credit card information collected from your customers during non-real time credit card transactions is stored in the store database in an encrypted format. It is decrypted *on-the-fly* only through the order management module of BackOffice +. If you download the Comersus store database (an MS® Access database) or make a query over SQL Server database you will not be able to read credit card details.

Also for security reasons, credit card information is never included in an order confirmation e-mail. You can configure Off Line Payment Package to send encrypted CC data by e-mail.

**Note:** When users submit their orders, they will simply select “Credit Card” from the payment option drop down menu on the checkout page. They will not know whether credit cards are processed online (real-time) or off-line on your store.

## Generating Invoices from the Back Office

With BackOffice+ and BackOffice Lite Extensions you can generate Invoices based on online orders. You will have to select one specific order and then you will be able to print the invoice in your printer directly from the web application.

The Invoice template is located in the script `comersus_backoffice_generateInvoiceExec.asp`

You can change the layout using any HTML editor. If you have BackOffice+ a bar code chart will be printed in the Invoice so you can use a Bar Code Reader for your Accounting programs or third-party applications.

## Back-orders

To enable Back-Orders go to BackOffice, Settings, Configuration and change `pUnderStockBehavior` to `backorder`.

If one product has no stock, the customer will get an icon to make a Back-Order. In the next screen the customer will enter name, email, quantity and comments. This form will be sent to store administrators. As soon as the product is received the company can notify all interested customers.

## Reward Points

Your store can automatically provide Reward Points to your customers so they can use those points to make payments. You can define how many points per order total you are going to provide. That setting can be modified from BackOffice, Configuration, Settings, `pBonusPointsPerPrice` key. If you enter 0.5 the customer will receive ½ point per each dollar spent. Then he can return to the store and use those points earned to pay for an order. Note that the points can only be used to pay for subtotal (shipping price and taxes cannot be paid with Reward points).

You can also verify and modify Reward Points from BackOffice+, Sales and Customers, Modify Customer.

*Note: Points will be assigned when the order is marked as paid from Back Office+ and not when the order is posted.*

## Recurring Billing

With Power Pack Premium you can use Recurring Billing, an interesting feature to make automatic invoices at regular periods (monthly, weekly, etc).

To enable this feature you need one posted order as the base order. From BackOffice +, Sales, List Orders you can browse that base order.

At the bottom of the Order Details page you can find a drop down menu to select the Period in days (7, 15, 30, 60, etc) and a box to define the next billing date for that order. After submitting that form the order will be listed with a small icon indicating that you have defined recurring billing.

Regarding the execution and verification of the order to be resubmitted you can find a file named store/comersus\_optRecurringBillingVerification.asp

Using WSH (Windows Scripting Host) or any other way to auto execute or load ASP pages in your server, you have to define once a day for this script.

If you cannot create WSH execution in your server you can link that script to your BackOffice and execute it manually once a day.

*Note: there are also other custom options for this regular execution that can be developed by any ASP Programmer.*

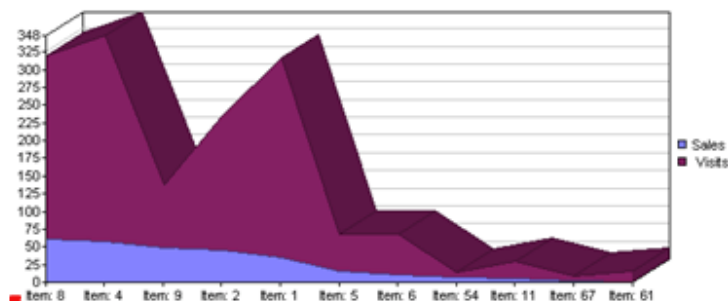
Once the automatic verification is made and if there is a pending order to be billed that day, the order will be created and the store administrator will receive an e-mail notification.

With this notification, the administrator will have to post the payment and mark the order as paid from the BackOffice, since the order is saved as Pending at first.

## Reports and Charts

Generating reports helps you keep track on orders that have been placed, view customer activity, and integrate with other applications by exporting order details.

Product	Description	Visits	Sales	Sales/Visits
8	The Best Laid Plans	259	62	0,24
4	Internet Manager	290	58	0,2
9	Orpheus Emerged	89	50	0,56
2	DVD Spinal Tap	189	46	0,24
1	Windows Millennium Edition	283	35	0,12
5	Red Hat Linux Administrator's HandBook	52	16	0,31
6	So You Want to Be President?	57	11	0,19
54	La Belle Noiseuse	6	8	1,33
11	Red Hat Deluxe WorkStation	24	6	0,25
67	Sheldon Bundle	8	2	0,25
61	Dupont Ellipsos Fountain Pen	16	1	0,06





## Generating Sales Reports

To view sales reports for your store, select *Sales / Statistics and Reports*. The window that is displayed provides the following information:

- **Sales and Visits**
- **Orders per month**
- **Totals per month**
- **Revenue per product**
- **Sales Forecasting**

Comersus allows you to filter per date or per product depending on the report. Some reports will show charts using Java technology (included with most popular web browsers like IE 5.0 and above).

You can also **export sales data** from Utilities Menu in Microsoft Excel format.

*Note: consider that some reports only get data from paid or delivered orders and that is why sometimes you can get an error message "not enough information to create reports": You can change this with a small customization .*

## Affiliates

Affiliate marketing is what has been behind the success of many of the largest online stores in the world. Are there other Web sites on the Internet that may be interested in promoting your products, or just talking about them? If the answer is yes, then it may be a good idea for you to set up an affiliate program.

The concept of using *affiliates* is simple: a Web site other than yours refers potential customers to your store and, if they order, receives a commission on the sale. Affiliates can generate significant incremental revenues for your store, and are rewarded for doing so by the commissions that you will pay out to them.

To implement an affiliate marketing program, you need a system that tracks who referred the customer who placed an order, and keeps a log of commissions accrued by each referrer. Comersus provides you with a basic affiliate management system.

To set up a new affiliate program, follow these steps:

- **Create a new affiliate.** To create a new affiliate, select *Sales Menu / Affiliates* form. To set up the new affiliate Web site: add a name for this affiliate, a contact e-mail, and the commission rate. If the rate is 11.50%, enter 11.5. Comersus will automatically generate a unique ID for the new affiliate, which is what will be used to identify orders coming from its Web site.
- **Generate links for the affiliate.** For Comersus to recognize which affiliate referred a certain customer, the link that the customer clicks on must contain a special code that identifies the affiliate. For example, let's say that a Web site would like to insert on their Web pages a link to your store so that whatever a customer buys, they would get a commission. The link would look like this:

<http://www.yourwebsite.com/Comersus/store/default.asp?idaffiliate=9>

This is the exact same link that you are using on your own Web site to link any page of your site to the store's front page, except for the code that appears at the end of the link: "idaffiliate=9". This code identifies that affiliate number 9 is the one sending the customer to your Web site. Without the identifier, Comersus would not recognize that a Web site referred the customer, and you would not know if you owed a commission.

You can also let any store visitor to signup as an affiliate if you have Power Pack Premium. To do so just enable the affiliate registration link from store configuration. In this case a link will appear in the storefront and any visitor will be able to enter their personal information, as a result they will obtain a page with the link and available banners. You can configure banner file names from store configuration also.

**List commissions reports.** Periodically, you will have to generate reports to see how many sales your affiliates have generated and calculate their commissions. To obtain a quick snapshot of sales generated by affiliates click on *list commissions*.

**Note:** If your affiliate network grows to a point where computing and paying commissions becomes too time consuming, you may want to investigate other systems that can help you manage that part of your store. Sophisticated affiliate management systems are available in the market, allowing you to do things such as automatically computing commissions and paying your affiliates, applying different discounts for different products, and much more.

## Affiliates and Suppliers Own Sales Listing

Using BackOffice+ you can create a new admin record with 75 level (listing) and assign an existing supplier or affiliate. Those profiles will have access only to specific parts of the BackOffice (reports for own products) and in the case of suppliers they can also add and modify products under their supplier group.

## Adding Forbidden Keywords from sales

From the Display Order you can add forbidden keywords. This is useful if you are just browsing orders and you realize that you have one order like:

- Name: John Test
- Email: [ImAHacker@hotmail.com](mailto:ImAHacker@hotmail.com)

Just with one click you can add the last name or the email to the forbidden keywords list and the next time AntiFraud Package will stop the user before reaching the gateway.

You can also add and remove forbidden keywords from the menu.

*Note: consider that this is an optional package included with certain Power Packs.*

## Serial Codes Management

From this menu you can define unique serial codes by product. Each time you sell one of those products, the Serial Code will be distributed by email as a Digital Good and the Serial Code will be marked as used.

*Note: if you want to distribute the same serial code to all your sales of the same product you can use Digital Goods field directly.*

## Store Survey

With Store Survey you can obtain important information about customers experience in your store.

To enable Store Survey go to Settings/Configuration and enable pExitSurvey

The survey screen will be presented when the customer leaves the store using important exit points like:

1. Off Line payment confirmation
2. Dynamic Index
3. List Categories and Products
4. Default order confirmation

The survey results will be sent by e-mail to the administrator along with the date of the survey.

*Note: Javascript is used to present the store survey, certain Browser security measures may block the new window containing the survey*

## Utilities

---

**U**tilities menu is a compilation of tools that will assist you in the day by day management. Here you can find a Decryption/Encryption Tool, a form to post SQL Queries to the database, Reset Functions to blank the database, Export Utilities, etc.

### Generic SQL

This menu is one of the most important for debugging and testing. You can post SQL Queries such as:

SELECT \* FROM CUSTOMERS

DELETE FROM suppliers WHERE idSupplier>2

INSERT INTO admins...

You can find several guides and resources about SQL in the Internet such as

<http://www.w3schools.com/sql>

### Reset Functions

Be careful with these links. The main purpose of Reset Functions is to clear certain parts of the database. You can clear all sales and customer records with one click. If you want to make this procedure manually it will get complicated since there are more than 8 related tables and sometimes you cannot delete one record if there is another related record.

*Note: if you want to start from scratch remember that you can download a clean MDB database from Comersus Free Downloads Page or you can obtain SQL and mySQL scripts to create a clean structure (included only with Power Packs).*

## Exporting data to Microsoft Excel Spreadsheets

With this function you can export products, customers and sales to an Excel Spreadsheet.

Your server must be able to use the component: OWC.Spreadsheet

Ask your webmaster about this possibility. Almost all Windows 2000 servers with Office installed have this component available.

Exported files will be placed into comersus/database folder

*Note: If your BackOffice is not exporting the files you have to verify that you have defined all permissions over comersus/ database folder and that you have that component installed.*

## Exporting data to QuickBooks

Use this function to export Comersus data to Quickbooks. At this time only Customers Data is supported. We will add more export functions soon for this popular application.

## Deleting Unclosed Sessions

With this option you can delete dbSession records. Why do you have unused dbSession records? Sometimes if a customer leaves the store without closing the session with logoff or cancel order and they have products in the cart, some records remain in the database with no use. If your store has considerable traffic, these records could become more and more and it's a good idea to delete them once in a while.

## Generating StoreFront Links

With this option you can create storefront links for

- One specific product
- One specific category
- A listing with links to all categories
- Links for customer actions such as ShowCart, Checkout, etc.

*Note: this utility creates the absolute links based on StoreLocation setting. If this setting is not correct, all links will reflect a wrong location.*

## Customer Menu

---

Your store automatically provides your customer with dynamically updated information regarding their past orders. It also allows them to edit their account information, and use the “Wish List” feature of Comersus, if you enabled it. You can link to this section of your store from your Web site navigation (e.g. “Customer Service” or alike) or from the customer service area of your Web site, if you have one.

To log into the customer service area, your store visitors will have to first register with your store. Then, at any time, they can use their user name (which is their e-mail) and their password to log in. If they forget their password, Comersus can automatically send it to their e-mail address if they provide an e-mail address that does in fact belong to a registered customer.

From the customer service area, your customers can:

- **Cancel an order.** With this feature the customer is able to cancel a pending order . An e-mail notification will be sent to the store administrator.
- **Track an order.** This feature provides a customer with details regarding how the order was shipped, when, and related tracking number, if available. This is information that you would add to the order when changing its status from “Pending” to “Delivered” using the *Manage Orders* component of Comersus BackOffice +.
- **Download Digital Goods (new!).** With this optional feature the customers can download zip files related to their orders without knowing the real location and name of the file.
- **Modify personal information.** Here is where customers can edit their account information such as their billing or shipping address. Even if they used a credit card to place a previous order, for security reasons their credit card information is not shown on this page.
- **View wish list.** If the *Wish List* feature of Comersus is enabled on your store, customers can add items to their *Wish List* when browsing your catalog, instead of purchasing them. This allows them to virtually “save” a list of items in which they are interested, but which they are not ready to buy at that time. They can later view the list and add any of the items to the shopping cart at any time by logging into the customer service area and viewing their *Wish List*.
- **List Auctions.** Customers can list all current active auctions. Auctions will be listed depending on customer type (Retail, Wholesale).

- **Contact a store representative.** With this option the customer can contact store representatives using a predefined form with categories to define the destination of the contact form.
- **Log out.** By clicking on *Log Out*, a customer forces the store to “forget” who he/she is. The customer will then have to either log in again, or register as a new customer. Closing the browser also logs a customer out of the store.

## Enabling Digital Goods Download

To enable Digital Goods Download you need the Power Pack that contains this individual feature. If you have a product that can be distributed as a digital good (like e-books, mp3 files, movies, etc) you have to follow this guide:

- 1- Zip the files and copy them into digitalGoods folder (you can rename this folder for security purposes and then rename also the setting inside comersus\_optDownloadDigitalGoods.asp)
- 2- Edit each individual product using the BackOffice and enter the file name into digitalGoods field.
- 3- Consider that orders should be marked as PAID or DELIVERED to enable the customer download, so configure your online payment gateway’s Silent Response or manually mark orders as paid from BackOffice when you confirm the payments.
- 4- Your customers may download purchased files from Customer Menu, Order Tracking. The files will be renamed in real time with OrderNumber\_FileName.zip (like Order2008\_File8.zip) and the Browser will show a download popup box. You can also use ASPUpload component to hide the original location of the file and even use Dynamic Zip File creation to create one file per customer password protected.
- 5- If you want to limit the number of days to let the download link you can edit the setting key pDaysToDownloadGoods
- 6- You can include a custom message in the outbound email with payment confirmation so your customers will know where to go in order to obtain the purchased files.

## Professional Databases

---

**Y**our store has an Access database for testing and small stores; however we advise to use Microsoft SQL Server or mySQL databases. You can migrate the data from the mdb file to SQL Server or mySQL using third party tools or you can get Power Pack Medium and Premium since they include the scripts to create professional database structures in order to obtain a blank database prepared for Comersus.

### SQL Server or mySQL?

The decision is up to you. Both are professional databases and are fully supported by Comersus. The main differences lie in price and licensing schemas. MySQL is free for certain situations and the license is Open Source. SQL Server is more popular and some companies have contracts with Microsoft so they don't have additional license fees to pay.

### Creating the Microsoft SQL Server Database

*Note: you need Power Pack Premium to obtain MS SQL Server scripts.*

1. Open SQL Enterprise Manager and Create a new database called "Comersus".
2. In SQL Enterprise Manager go to Tools>SQL Server Query Analyzer.

On the drop down box at the top right make sure your database "Comersus" is selected.

Then copy and paste the contents of SQLServer4xxStructure.txt into the Query Analyser.

Click the green play button at the top. Some errors may appear but this is normal.

If you get some error like "Specified owner name 'dbo' either does not exist or you do not have permission to use it", then maybe you are have not logged in as administrator. Just open the file with some text editor and replace all "dbo" by "yourLoginName". Then copy & paste and try again.

3. Now copy and paste the contents of SQLServerData.txt and repeat the procedure explained before.

4. Go to Security, Login Sessions, add a user name "Comersus" using database "Comersus". Put SQL Server authentication.



5. Select Users in tree view. New Database User named "Comersus". With public and db\_owner checked.
6. Open comersus/includes/settings.asp and change the connection to SQL method. Change the IP of the server (127.0.0.1 for local server) and change the password by the one you selected on item 4.
7. Now you can open the store with BackOffice+ and add categories, define payments, etc.

## Creating the mySQL database

*You need Power Pack Medium or Premium to use mySQL database.*

Since Comersus 4.10 you can use mySQL since the StoreFront and BackOffice+ are compatible with mySQL database. First of all download mySQL Database and myODBC from [www.mysql.com](http://www.mysql.com) , then follow these simple steps:

- 1- Open winMySQLAdmin
- 2- Create a new database named `comersus` at Databases TAB
- 3- Open mySQLManager
- 4- Copy and Paste mySQL4xxStructure.txt contents
- 5- Press > green button once for each segment
- 6- Repeat the procedure with mySQLData.txt
- 6- Create a new System ODBC named comersus with Host=localhost and User=root (blank password)
- 7- Open comersus/includes/settings.asp and change connection method to DSN (you have an example commented)
- 8- Open comersus/includes/settings.asp and change pDatabase="mySQL"
- 9- Add at least one new shipment and payment methods

## On-Line Payment Gateways

---

**Y**ou can set up several payment gateways with Comersus Cart. This chapter will contain specific instructions for each payment gateway. Why do you have to use On-Line Payment Gateways? Some valid reasons: it is very convenient, you can focus on tasks other than charging each payment manually, you can use security tools from Payment Gateways to avoid frauds, your customer will obtain the authorization code in real time, you can deliver digital goods in real time, and you can update stock and sales automatically with Silent Responses from Payment Gateways.

### 2Checkout

First of all you have to sign up at <http://www.2checkout.com/cgi-bin/aff.2c?affid=33169>. With this system you don't have to wait weeks to get approved; after making the initial setup payment you are able to sell online.

*Make sure that you have the Power Pack that contains the 2Checkout payment form. More information at <http://www.comersus.com/store>*

2Checkout will send you a Store Number. Write down this number since you are going to need it in order to set up the payment in Comersus.

Make sure that you have copied the files `comersus_gateway2Checkout.asp` and `comersus_gateway2CheckoutOrderConfirmation.asp` into `comersus/store` folder.

Using the BackOffice create a new payment method named Credit Cards with redirection URL pointing to `comersus_gateway2Checkout.asp`.

Using BackOffice, Settings, Configuration open the setting named `p2CheckoutSID` and insert there the Store Number.

*At this point you are ready to sell and charge credit cards. If you also want to configure the PassBack to notify Comersus when the order is approved, mark the order as paid and distribute an automatic payment invoice, continue with following steps.*

Log in now to 2Checkout Control Panel at [www.2checkout.com/login.htm](http://www.2checkout.com/login.htm) and select Account Details, Return.

Go to cartPurchase.2c Shopping Cart Parameters and change to Yes Return to a routine on your site after...

In the Return URL enter

[http://www.yourSite.com/comersus/store/comersus\\_gateway2CheckoutOrderConfirmation.asp](http://www.yourSite.com/comersus/store/comersus_gateway2CheckoutOrderConfirmation.asp)

In the Secret Word box enter any secret word as a combination of letters and numbers, then press Save PassBack Parameters.

Open BackOffice, Settings, Configuration and enter the Secret Word into p2CheckoutHashWord key.

Now you are ready to accept online payments and to deliver digital goods in real time.

## Authorize.net SIM

1. Sign up using any Commercial Partner at [www.authorize.net](http://www.authorize.net). You will obtain an account name and password.
2. Make sure that you have Power Pack Premium and that you have selected Authorize.net SIM gateway. More information at <http://www.comersus.com/store>.
3. Copy `comersus_gatewayAuthorizeNetSim.asp`, `comersus_gatewayAuthorizenetOrderConfirmation.asp` and `comersus_gatewayAuthorizeNetSilentResponse31.asp` into `comersus/store` folder
3. Using BackOffice, create a new payment method named Credit Cards and complete the field redirect URL with `comersus_gatewayAuthorizeNetSim.asp`
4. Log into <https://secure.authorize.net>, go to Settings, go to Receipt Page/Receipt Method/Default Receipt Link URL, enter [http://www.yourDomain.com/comersus/store/comersus\\_gatewayAuthorizeNetOrderConfirmation.asp](http://www.yourDomain.com/comersus/store/comersus_gatewayAuthorizeNetOrderConfirmation.asp)
5. Select Receipt Method: Link, and enter "Return to the store" as the text.
6. Go to Settings, Obtain Transaction Key. Using the secret answer you will obtain a new transaction key. Copy and Paste this key or write it down.
7. Go to Silent Post URL and enter [http://www.yourDomain.com/comersus/store/comersus\\_gatewayAuthorizeNetSilentResponse31.asp](http://www.yourDomain.com/comersus/store/comersus_gatewayAuthorizeNetSilentResponse31.asp)  
That script will execute the order status update (set order as paid, update stock, etc).  
Note: we advice to change the silent response file name to avoid any hacking over Silent Response scripts.
8. Log out and return to BackOffice Plus.
9. Go to Settings, Configuration and insert your Login ID into `pAuthorizeSimID` key and the Transaction Key obtained from Authorize.net into `pAuthorizeSimTxnKey`

10. If your store is in demo mode you can make test transactions to a Test Server. For that purpose you can use 4300000000000 as the credit card number.

Everything should be ready to start selling with AuthorizeNet online payments.

Common error & fix: if you get Error 97 (The time period for this request has expired. Applicable only to SIM API). The most likely cause is that the clock on your server is set incorrectly (check to see if it adjusts itself for Daylight Savings Time).

This will help you determine if you need to either adjust the time on your server, or if that isn't possible, adjust the timestamp your SIM script generates.

This error appears if the timestamp is either five minutes ahead of GMT or fifteen minutes behind GMT.

The below URL is setup for Error 97 testing. This tool will tell you if the timestamp your script is generating is significantly off:  
<http://www.sluggis.com/error97.htm>

If you are having error 99 you can find some help here  
<http://www.sluggis.com/error99.htm>

## Authorize.net AIM

First of all sign up using any Commercial Partner at [www.authorize.net](http://www.authorize.net). You will obtain an account and password.

*Make sure that you have Power Pack Premium, that contains Authorize.net payment forms. More information at <http://www.comersus.com/store>*

Copy all scripts that begin with comersus\_gatewayAuthorize into comersus/store folder.

Log into Authorize.net Control Panel. Go to Settings, Receipt URL and enter comersus\_gatewayAuthorizeNetOrderConfirmation.asp as the Default Receipt and comersus\_gatewayAuthorizeNetAimForm.asp as the form authorized to post transactions.

Then fill the Silent Response URL with comersus\_gatewayAuthorizeNetSilentResponse31.asp.

*Note: enter the full paths to each one of these scripts like  
[http://www.yourSite.com/comersus/store/comersus\\_gatewayAuthorizeNetAimForm.asp](http://www.yourSite.com/comersus/store/comersus_gatewayAuthorizeNetAimForm.asp).*

Go to Transaction Key menu, enter your secret response and obtain the Transaction Key (copy and paste to some temporary text document).

Log in to your BackOffice+ and encrypt the Transaction Key obtained from AuthorizeNet using Utilities/Encryption. Then paste the encrypted transaction key into Configuration/Settings/pAuthTransactionKey.

Create a new payment method named Credit Cards with redirection URL pointing to comersus\_gatewayAuthorizenetAimForm.asp.

## BeanStream

First of all go to [www.microsoft.com](http://www.microsoft.com) and download MS Soap Toolkit 3.0. After the download, install it in your server. Then sign up at [www.beanstream.com](http://www.beanstream.com) ; you will obtain a merchant ID and password.

*Note: Make sure that you have the Power Pack that contains BeanStream payment forms. More information at <http://www.comersus.com/store>.*

Copy the files comersus\_gatewayBeanStreamFormSoap.asp, comersus\_gatewayBeanStreamExec.asp and comersus\_gatewayBeanStreamSilentResponse.asp into comersus/store folder.

Using BackOffice, create a new payment method named Credit Cards with redirection URL pointing to comersus\_gatewayBeanStreamFormSoap.asp. Go to Settings, Configuration and insert your Merchant ID into pMerchantIdBeanStream key.

You can make test transactions using a test merchant id that you will receive from BeanStream. For that purpose you can use 43000000000000 as the credit card number. After testing you can log into your BeanStream account and retrieve those transactions.

Everything should be ready to start selling with BeanStream online payments.

*Note: If you want to install the basic version it is not necessary to install the Soap Toolkit and the name of the files to copy are comersus\_gatewayBeanStreamForm.asp and comersus\_gatewayBeanStreamResponse.asp. Remember that this version doesn't decrease the stock and doesn't change the order status. The most important difference is that this option links to the BeanStream server to enter the Credit Card information.*

## PayZip

1. First of all verify that your server supports the component MSXML2.ServerXMLHTTP.
2. Then sign up at [www.payzip.com](http://www.payzip.com) , you will obtain an merchant ID and password.
3. Login into your account and set this script name comersus\_gatewayPayZipSilentResponse.asp as the silent response script.
4. Copy the files comersus\_gatewayPayZip.asp, comersus\_gatewayPayZipStatus.asp and comersus\_gatewayPayZipSilentResponse.asp into comersus/store folder.
5. Using BackOffice, create a new payment method named Credit Cards with Redirection URL pointing to comersus\_gatewayPayZip.asp.

6. Go to Settings, Configuration and insert your Merchant ID and password for PayZip.
7. You can make test transactions using a test merchant id that you will receive from Payzip. For that purpose you can use 4567350000427977 as the credit card number, 421 as the CVC and 12/06 as the expiration date.
8. For live transactions open the scripts comersus\_gatewayPayZip.asp and comersus\_gatewayPayZipStatus.asp and you will find some instructions.
9. Everything should be ready to start selling with PayZip online payments.

## Protx

1. Sign up at [www.protx.com](http://www.protx.com) , you will obtain a Vendor ID and password.
2. You should also receive a script named functions.asp, place it into includes folder.
3. Copy the files comersus\_gatewayProtx.asp and comersus\_gatewayProtxSilentResponse.asp into comersus/store folder.
4. Using BackOffice, create a new payment method named Credit Cards redirection URL pointing to comersus\_gatewayProtx.asp
5. Go to Settings, Configuration and insert your Vendor ID and password for Protx.
6. You can make test transactions using a test Vendor ID that you will receive from Protx.
7. Everything should be ready to start selling with Protx online payments.

## OzHosting

1. Sign up at [http:// www.ozhosting.com](http://www.ozhosting.com) (look for the feature ecommerce web transactions) you will obtain a merchant ID and software applications.
2. Install the software and follow the instructions in order to register the components in your server.
3. Copy the files comersus\_gatewayOzHosting.asp, comersus\_gatewayOzHostingForm.asp and comersus\_gatewayOzHostingExec.asp into comersus/store folder.
4. Using BackOffice, create a new payment method named Credit Cards with Redirection URL pointing to comersus\_gatewayOzHostingForm.asp.
5. Go to Settings, Configuration and insert your Merchant ID for OzHosting.
6. You can make test transactions using a test merchant id that you will receive from OzHosting. For that purpose you can use 4242424242424242 as the credit card number.
7. If you change the demo mode of the storefront to false Comersus will send live transactions to the ozHosting gateway.

Note: if you are using a password you can enter it inside the script comersus\_gatewayOzHostingExec.asp

## SecurePost

1. Sign up at [www.merchantpartners.com](http://www.merchantpartners.com) , you will obtain a merchant ID and a component.

- 2 Register the component in your server named ATSSecurePost.dll.
3. Copy the files comersus\_gatewaySecurePostForm.asp and comersus\_gatewaySecurePostExec.asp into comersus/store folder.
4. Using BackOffice, create a new payment method named Credit Cards and redirection URL pointing to comersus\_gatewaySecurePostForm.asp.
5. Go to Settings, Configuration and insert your Merchant ID that you had received from SecurePost.
6. For test purposes you can contact them and ask for a test merchant id and a test credit card number.
- 7 For test purposes you can use merchant id equal to TEST0 and credit card number 5454545454545454.
8. Everything should be ready to start selling with SecurePost online payments.

## CyberSource

1. Verify that your server supports the component MSXML2.ServerXMLHTTP.
2. Sign up at [www.cybersource.com](http://www.cybersource.com), you will obtain a merchant ID, a reference code and a component CybsWSSecurity.dll.
3. Register the component and obtain a key (this is a file name yourMerchantId.p12).
4. Copy the files comersus\_gatewayCyberSourceForm.asp and comersus\_gatewayCyberSourceExec.asp into comersus/store folder.
5. Using BackOffice, create a new payment method named Credit Cards and redirection URL pointing to comersus\_gatewayCyberSourceForm.asp.
6. Go to Settings, Configuration and insert your Merchant ID, Reference Code and the key received from CyberSource.
7. You can make test transactions using your merchant id. For that purpose you can use 4111111111111111 as the credit card number and 10/2010 as the expiration date.
8. For live transactions open the scripts comersus\_gatewayCyberSourceExec.asp and replace <https://ics2wstest.ic3.com/commerce/1.x/transactionProcessor> with [https:// ics2ws.ic3.com/ commerce/ 1.x/ transactionProcessor](https://ics2ws.ic3.com/commerce/1.x/transactionProcessor)
9. Everything should be ready to start selling with CyberSource online payments.

## Payment Processor

1. Sign up at [www.paymentprocessor.com](http://www.paymentprocessor.com) to get a merchant ID.
2. Copy the files comersus\_gatewayPaymentProcessorForm.asp, comersus\_gatewayPaymentProcessorResponse.asp and comersus\_gatewayPaymentProcessorExec.asp into comersus/store folder.
3. Using BackOffice, create a new payment method named Credit Cards and redirection URL pointing to comersus\_gatewayPaymentProcessorForm.asp.
4. Go to Settings, Configuration and insert the Merchant ID received from PaymentProcessor.
5. For test purposes you can contact them and ask for a test merchant id and a test credit card number.
6. Everything should be ready to start selling with PaymentProcessor online payments.

## EPDQ

1. Sign-Up for the payment gateway and get a User and Password
2. Login at <https://secure2.epdq.co.uk/cgi-bin/CcxBarclaysEpdqAdminTool.e>
3. Configure pass-phrase with a password, allowed URL as [http://www.yourSite.com/comersus/store/comersus\\_gatewayEPDQ.asp](http://www.yourSite.com/comersus/store/comersus_gatewayEPDQ.asp), Post URL as [http://www.yourSite.com/comersus/epdq/comersus\\_gatewayEPDQSilentResponse.asp](http://www.yourSite.com/comersus/epdq/comersus_gatewayEPDQSilentResponse.asp), post user: your EPDQ user name, post password your EPDQ password (these values could be different also)
4. Create a new folder comersus/epdq and place there comersus\_gatewayEPDQSilentResponse.asp and comersus\_gatewayPaymentApproved.asp
5. Using your Web Site Control Panel add a user and password to comersus/epdq folder so if you load comersus\_gatewayEPDQSilentResponse.asp in your browser it will appear a password pop-up window. Use the same user and password sepecified in point 3
6. Create a new payment method in Comersus BackOffice named Credit Cards with redirectionUrl as comersus\_gatewayEPDQForm.asp
7. Configure the user and passphrase into Comersus/Settings/Configuration keys pEpdqId and pEpdqPass

## LinkPoint API

1. Download the LinkPoint API COM for Windows from [http:// www.linkpoint.com](http://www.linkpoint.com)
2. Register the linkPoint DLL that came inside the zip file
3. Extract the pem file text that came with your LinkPoint welcome e-mail to a file named xxxxxx.pem and place that file inside your server
4. Open Comersus BackOffice, Settings, Configuration and load your LinkPoint store ID and complete path to PEM file
5. Create a new payment method named Credit Cards with redirection Url pointing to [https://www.yourSite.com/comersus/store/comersus\\_gatewayLinkPointApi.asp](https://www.yourSite.com/comersus/store/comersus_gatewayLinkPointApi.asp)



## Performance and Speed

---

**Y**ou can install and use the default version with Access database in most of the cases but sometimes it is necessary to make some modifications in order to get better performance and speed in your store. Some modifications are easy to apply and others will require the assistance of programmers, webmasters or database administrators.

### Database

The first variable to consider is the database to be used. Comersus is prepared to work with Access, mySQL and SQL Server. Access comes with the default version and you don't need special skills to use this database. However, if your store has some traffic and you have a big catalog it may be necessary to switch to one professional database like mySQL or SQL Server.

In some cases you will get a store 5 times faster just by changing the database to mySQL or SQL Server. You will also get a more reliable system with tuning tools, backup sub-systems, security and additional features that cannot be implemented in Access. Another consideration is the number of visitors: based on several technical documents found on the Internet, with Access you cannot have more than 300 simultaneous users browsing your store. With a professional database you can easily provide service to all your customers at the same time.

*Note: you will need Power Pack Medium or Premium to use Professional Databases since they come with the SQL scripts to create database structures. You can also migrate from Access using third-party tools but you will need manual adjustments.*

Using Diagnostics and Tools, Speed Test, in a Compaq Proliant DL-380 with 256mb and 1 processor it took 4 seconds to insert 1000 records into products table for Access database. Using mySQL database, the same test took only 1,64 seconds.

### Static Pages

By default, Comersus uses a dynamic script to retrieve some products, categories and other information to your Store Entry Page. If you have huge traffic, and all users come to the same

Entry Page, you will have an overload to your database. In some cases it is good to design a static Entry Page with all images, product description and prices hard-coded. You will lose some flexibility but you will have performance benefits.

Without using this extreme schema you can create a simplified version of the dynamic home with less queries to the database or queries that are updated to a temporary file once a day.

You can also replace dynamic categories pages with static pages with hard-coded categories if they don't change so often.

## Image Optimization

Try to maintain Header and Footer templates light. Avoid several GIF animations and huge images. Try to cut big images into small pieces. Use the same idea for product images. You can use specific graphic software to make optimizations of all web images to be used.

## Compiled Code

Comersus is developed in a scripting language. However, it can be optimized by compiling the ASP files into a DLL. This option is not designed for everyone since not all hosting spaces accept DLLs. You must also consider that you cannot include changes immediately as you can do with default version.

Anyway, this is a good choice for companies that run their own web server, looking for another speed layer.

## Load Balance

Since Comersus 5 you can also use a new utility named Load Balance. For high traffic stores, sometimes the web server reaches the limit of http requests. With this utility you can configure two web servers running Comersus store connected to the same database.

The utility will retrieve traffic conditions in each web server and it will route visitors to primary or secondary web server.

Instructions:

1. Copy comersus\_optLoadBalanceMain.asp and default.asp into your main web server, comersus folder
2. Copy comersus\_optLoadBalanceRemote.asp into your secondary web server, comersus folder directory
3. Copy comersus\_optLoadBalanceActiveUsersRoutines.asp into comersus/store folder in both servers
3. Configure Remote Server Location inside pRemoteServerLocation (IP or URL)
4. Open your main and remote web server's comersus/store/default.asp and insert the following line to track visitors

```
<!--#include file="comersus_optLoadBalanceActiveUsersRoutines.asp"-->
```

## Other changes

There are other things that can be modified in order to speed up your store.

1. You can replace ASP Includes by inserting the included file in the base script for most popular pages.
2. You can replace Dictionary Object translation messages for static HTML if you are not going to need the Multilanguage option.
3. You can remove all IF comparisons for unused features of Comersus like Hot Deals, Reviews, Best Sellers, 1StepCheckout, etc.
4. You can disable visit counters for products and main store counter.
5. You can rewrite SQL Sentences and create additional indexes for specific scripts depending on your database system and catalog size.
6. You can replace wildcard keyword searches ('%b%') with complete field searches ('books').
7. You can install the store in one dedicated server and the database in one or several dedicated server/s and make a fine tuning with a database administrator.

## Troubleshooting

---

If you get errors in your store don't panic. Comersus has been prepared to obtain comprehensive information about any database error (the most common), email errors and other types of errors. What can you do? Here you will find a guide to diagnose, obtain free or paid assistance and finally solve your trouble.

### Diagnose the trouble

First of all try to obtain all the information about the error:

- 1- The error is produced always or just randomly?
- 2- The error is related to the StoreFront or BackOffice Utilities (management part)?
- 3- Which script caused the error? (you can obtain the script name from Temporary Error Email).
- 4- You have verified the error or your customers told you? If your customers told you, did you get an automatic email with the error report?
- 5- The error is related to database, syntax, outbound emails, third-party credit card gateway, etc?
- 6- Can you verify the same error at current Comersus Demo? (Sometimes the error cannot be verified there since you need to preload some specific data to test it).
- 7- The error is related to any script modified or customized by you? Or is it produced over the original scripts?
- 8- Which Comersus Version do you have? Which BackOffice version?
- 9- Did you try Diagnostics and Tools? This free utility is very helpful to determine common installation errors.

## Get Assistance

You can get free assistance at Comersus Forum located at <http://www.comersus.org/forum>. You can run a search by software version, keywords, etc. in order to determine if any other person has had a similar issue. Most problems are solved using a previous technical response.

If you can't find a previous message regarding the same topic, you can post a new message. Remember that you have to include all the information about the error. Use the Diagnose the Trouble guide to categorize your error.

*Note: if you don't have time to wait for free assistance remember that you can get professional support services at Comersus.com. These paid services include phone support, remote installation, remote trouble fixing, data recovery, password reset and more.*

If you have purchased a Support Program at Comersus.com you can use Comersus Support System to request one to one technical assistance.

## Useful Tips

1. If your error was produced just once or once in a while, maybe the reasons were temporary (like database was down, connection trouble, session lost due to a specific condition of the server, etc). Try to determine whether the error deserves attention or not.
2. Make sure that you did follow all installation instructions.
3. If you get a database error you will also get an email with the SQL sentence that caused the error. You can try to run that sentence from SQL Utility of the BackOffice in order to determine the error nature and debug the situation.
4. All scripts have a sentence ON ERROR RESUME NEXT that causes execution to continue with the statement immediately following the statement that caused the run-time error, or with the statement immediately following the most recent call out of the procedure containing the On Error Resume Next statement. If you get one specific error in one script you can comment that line and try the execution in order to verify if some other error is being trapped.
5. If the error is produced after custom modifications you can try to restore original scripts in order to debug which modification caused the error.
6. If you get email errors make sure that you have used Diagnostics and Tools to determine the email configuration and that email from address is not causing Relay troubles with your SMTP server.
7. If you get frequent database errors using Access in a high traffic store consider migrating to SQL Server or mySQL databases. Access has limitations in a high-traffic environment. You can ask about Comersus.com official hosting plans with mySQL databases enabled.
8. Make sure that you are using paid add-ons compatible with the version of the database and Storefront. For example: you cannot use 4.05 add-ons for Comersus StoreFront 4.11

- (if one of the first 2 number changes, then some database modifications were included and that means that your old scripts will not be 100% compatible). To obtain upgrades of paid add-ons Version Upgrade Program is needed. Ask Comersus.com about this.
9. You can open includes/settings.asp with a text editor and change pTrapDbErrors=0. In this case most database errors will not be trapped and you can eventually see the SQL sentence that is producing the error printed on screen.

## Diagnostics and Tools Application

You can download Diagnostics and Tools in Comersus Free Downloads page. This application has several tests to verify and diagnose technical troubles.

Some of the options included are:

- ASP compatibility
- Session variables
- Dictionary test
- Database read and write
- Speed test
- Security Check

Other tools included are:

- Reset password of the Backend
- Bulk import utilities
- Automatic order test
- Session variables retrieval

# Appendix A

---

## Web site home page and store home page

Your Web site's home page may or may not also be the store's home page. This is up to you. All store pages are saved in a directory on your Web server called *comersus/store*. The file name and location of the store's home page is as follows:

<http://www.yourwebsite.com/comersus/store/default.asp>

The easiest way to make your home page the store's home is to redirect your home page to this page. You can redirect a page to another page on your Web site in many different ways. An easy way to do it is to add the following META tag to the <head> section of your home page:

```
<meta http-equiv="refresh" content="0; url= http://www.yourwebsite.com/Comersus/store/default.asp">
```

## HTML links to main store pages

The following is a list of links to special store pages. Remember that you can also use Generate Links from BackOffice+ to create these links dynamically.

### **Store home:**

<http://www.yourwebsite.com/comersus/store>

### **Hot Deals:**

[http://www.yourwebsite.com/comersus/store/comersus\\_listHotDealsProducts.asp](http://www.yourwebsite.com/comersus/store/comersus_listHotDealsProducts.asp)

### **Browse by Category:**

[http://www.yourwebsite.com/comersus/store/comersus\\_listcategoriesAndProducts.asp](http://www.yourwebsite.com/comersus/store/comersus_listcategoriesAndProducts.asp)

### **Catalog Search:**

[http://www.yourwebsite.com/comersus/store/comersus\\_advancedSearchForm.asp](http://www.yourwebsite.com/comersus/store/comersus_advancedSearchForm.asp)

### **View cart:**

[http://www.yourwebsite.com/comersus/store/comersus\\_showCart.asp](http://www.yourwebsite.com/comersus/store/comersus_showCart.asp)

### **Customer Login:**

[http://www.yourwebsite.com/comersus/store/comersus\\_customerAuthenticateForm.asp](http://www.yourwebsite.com/comersus/store/comersus_customerAuthenticateForm.asp)

### **Product Links:**

[http://www.yourwebsite.com/comersus/store/comersus\\_viewItem.asp?idProduct=productID](http://www.yourwebsite.com/comersus/store/comersus_viewItem.asp?idProduct=productID)

For example, if the productID is 168, the link will be:

[http://www.yourwebsite.com/Comersus/store/comersus\\_viewItem.asp?idproduct=168](http://www.yourwebsite.com/Comersus/store/comersus_viewItem.asp?idproduct=168)

You can obtain the productID from the *Manage Products / Modify Products* page.

## Appendix B

---

### Customizing your store's graphical interface

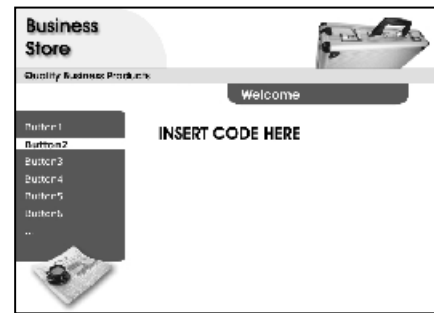
It is a good idea to keep the look & feel of your Web site consistent across all pages. This helps you convey a sense of professionalism and quality to your Web site visitors. For this reason, your online store pages should appear just like any other page of your Web site. This section explains how to integrate your Web site's design with the pages generated dynamically by Comersus.

The following paragraphs require a basic understanding of HTML.

#### First Step: create a template.

A template is typically a Web page that contains the main graphic and navigation elements that make up a Web site's interface. For example, the template on the right features a few graphic elements at the top, and a navigation menu on the left side. The page content would typically go where the "Insert Code Here" message is located. Comersus code would be inserted in the same area.

When you create a template, it is a good idea to change all the navigation and image locations from relative (e.g. *images/myimage.gif*) to absolute (*http://www.mysite.com/images/myimage.gif*). This ensures that none of the links will be broken, regardless of the directory or subdirectory where the page may be located.



#### Second Step: create "header.asp" and "footer.asp".

Place your mouse cursor at the beginning of the section where the page content should appear. If you are using an HTML editor such as Macromedia® DreamWeaver or Microsoft® FrontPage, you can do this in the design view by positioning the cursor at the center of the cell that is going to contain the page content (i.e. shopping cart code, etc.).

Now switch to the HTML view to display the code. Copy all the code from that point to the beginning of the page, paste it into a new Notepad file, and save it as "**header.asp**". Go back to the template file and now copy all the code from that point to the end of the document, paste it into a new Notepad file, and save it as "**footer.asp**".

#### Third Step: upload the files.

Upload both files to the "**comersus/store/**" folder on your Web server. You will see that sample files are already located in that folder. Rename the sample files before you upload your files to the server so that you can use them as a reference.

#### Note: Linking from the template to the shopping cart.

You may want to add links to pages of your Web store directly from your template, so that the links are available to your site visitors from any page. For example, a link to the search page, to the "browse by category" page, the login page, etc.



For more information about how to generate links through Comersus, see *Store Options / Generate Links* or *Appendix A*.

*Note: From Comersus 4.28 we have released Free Skins in different styles (Books, Hardware, Software, and Sports). You can download them from Free Downloads Page.*

## Appendix C

---

### How Language Works

Language schema in Comersus is organized in 3 parts.

Part	Stored in	Modify with
Screen and email messages	Comersus/includes/languages.asp	Any text editor like Ultraedit, Note Pad, etc
Catalog descriptions (products, categories, optionals)	Database, products_languages categories_languages options_languages tables	BackOffice+ (included with Power Pack Medium and Premium)
Text Gif buttons	Comersus/store/images/English (or Spanish, Portuguese, etc.)	Graphic Modification Program like Photoshop

If you want a full multilanguage store you will have to use and maintain all the parts together.

### Adding languages to Comersus

Screen and email messages are translated to several languages (English, Spanish, Dutch, Italian, French, Norwegian, German, Greek, Portuguese, Danish and Swedish) and they can be obtained for free at Comersus site. However you must consider that some language translations could be outdated, so you will have to contact the translator to request the current translation.

After you download the translations you will have to merge languages.asp with languages.inc depending on the languages you want and following instructions contained in the zip file.

### Editing messages generated by Comersus

Most of the text messages, links and form field descriptions that you see on your store are not hard-coded in the shopping cart pages, but rather fed automatically from another file. The file is named languages.asp, and it is located in the includes subfolder of comersus.

You can edit any of the text messages. Before you do so, make sure to save a backup copy of the existing file so that you can go back to it if you need to.

### Defining customer languages selection

By editing the file comersus/store/header.asp you can remove or add languages so the customer may change the language selection. By default all languages are enabled; you can delete languages by removing the select line using any text editor.

```
<option value="comersus_changeLanguage.asp?language=dutch">Dutch</option>
```

Removing these line will remove the Dutch selection.

## Creating a Multilanguage catalog

Besides the screen and email messages you can also automatically change product descriptions, categories, etc. depending on user language selection. For that purpose you will need BackOffice +. First of all you have to create the base product, category and option in the default language (i.e: English); then you can click on the link Modify Other Languages to add the same caption in other languages.

*Note: before adding products in other languages you have to add the languages to be used with StoreFront/ Products/ Languages Option. Consider that you have to use the same spelling as in languages.asp (for example Spanish and not Español).*

## Changing Gif Texts with language selections

You can also change the buttons with texts on them like Add To Cart, Search, etc. with user language selection.

For that purpose you have to create a folder with the language name under comersus/store/images folder and then place the image to be translated in all language folders like

Image: myImage.gif

Comersus/store/images/English/myImage.gif (with the text in English)

Comersus/store/images/Spanish/myImage.gif (with the text in Spanish)

Comersus/store/images/Swedish/myImage.gif (with the text in Swedish)

If you want to insert the Multilanguage image in your HTML page you have to use the following sentence:

```

```

# Appendix D

---

## Frequently Asked Questions

For an updated list of answers to frequently asked questions, visit the Comersus forum area located at the following address: <http://www.comersus.org/forum>

---

### **What is the difference between Hot Deals and Show In Home items?**

Show In Home items automatically appear on your store's front page. Hot Deals appear on the "Hot Deals" page that you can link to from anywhere on your Web site. A product may be both a Hot Deal and Show In Home item, or just one of the two. To set Hot Deals and Show In Home items, use the 'Modify Product' module of BackOffice +.

Note that the store's front page may or may not be your Web site's home page. It's up to you to set it up either way. For more information, see Appendix A of Comersus User's Guide.

---

### **What happens when I change the customer type to Wholesale?**

Retail (BtoC) customers are shown and charged the online price. Wholesale customers are shown and charged the wholesale price. You define the two prices when you add or modify a product using the Manage Products menu. In addition to prices, note that quantity discounts can be different for wholesale customers.

---

### **Will Retail customers or casual site visitors see the pricing I've set for wholesale customers?**

It's configurable. You can use pShowBtoBPrice setting to define that.

---

### **If I don't want to ship a certain product, how can I have shipping options not appear during the checkout process when customers select that product?**

Simply set the weight to zero in the product details page. To do so, select *Modify Products* in the *Manage Products* menu. When the weight is set to zero and your shipping options are defined from weights>0 your shipping options are not displayed during the checkout process. This does not affect other products. You can define "Shipping is not needed" for weight =0.

---

### **Can I print an invoice from within BackOffice +?**

Yes. To print an invoice, click on *Generate Invoice* link at *Sales Menu*. Find the order you want to generate an invoice for and click on the Invoice icon. You can now print the invoice for faxing or mailing.

---

### **How do I find out the credit card number used for a transaction?**

If you use real-time credit card processing on your store, then the payment gateway that you set up to handle your transactions will securely hold that information. Since transactions are processed automatically, you will rarely need to know the credit card number. If you needed credit card details, you would log into the administration area that most gateways provide, or contact the gateway directly.

If you use off-line credit card processing on your store, then you need to retrieve credit card details to process the transaction after an order has been placed. Credit card information is encrypted and stored in your store's database. It is never included in confirmation e-mails sent to you or the customer by Comersus. The only way to view it is to display details for a particular order via the *Sales and Customers menu, show order module* of BackOffice +. The information is decrypted *on-the-fly* for you to view through BackOffice +.

---

### **How do I link my Web site to the shopping cart?**

Linking static pages on your Web site to the dynamic Web pages generated by Comersus is very easy. In this guide you can see most important links' HTML code to link any page of your Web site to the area of your on-line store that you have selected.

There are two types of links that you will likely use:

- Product links, which allow you to deep-link into the product catalog to a product details page.
- Store links, which allow you to link to store pages such as the "search" page, the "browse by category" page, the "view shopping cart" page, etc.

---

### **Can I change the store buttons?**

You can customize the appearance of your shopping cart buttons by uploading new buttons to your Web server. You also need to change the HTML templates involved by checking that you are not touching ASP tags or any other programming code. Usually you will need to modify `comersus_viewitem.asp` and `itemdetailsm.asp` files.

Note: before you upload new buttons to your on-line store, make sure that the buttons have been saved in a compatible format (JPEG or GIF), and that they are small enough to display properly on your store (try not to exceed 110 x 25 pixels).

---

### **Can I modify some of the wording on the shopping cart?**

Yes, any message or field description that appears on your storefront can be changed. Comersus keeps virtually all of them in one file called `languages.asp`, which is located in the `comersus/includes` subfolder on your Web server. So all you have to do is open that file and change the text that you would like to replace.

Make sure to first make a backup copy of `languages.asp` so that you may revert back to it if you need to. This feature also allows you to have a storefront that displays messages in a language other than English.

---

**When customers browse my store by category, only 10 categories are displayed per page. Is there a way to change that number?**

There is a line of code in a file named "comersus\_listProductsAndCategories.asp" that reads:

```
const numPerPage = 10
```

You can change that number to have more or fewer categories appear on each page.

---

**How can I have NO pictures associated with a product or a category?**

There is an easy way to accomplish this. Just create a 1 x 1 pixel transparent GIF file. Name it "clearpixel.gif". Upload it to your Comersus store using the Upload Images component of BackOffice +. From then on, whenever you want a product or category not to have any image associated with it, enter "clearpixel.gif" in the image field.

---

**I would like to use pages that are already on my Web site as product descriptions. How can I do that?**

Comersus allows you to use HTML tags in the product description field. This means that you can easily link from your shopping cart's product details page to other pages on your site.

---

**How can I define different shipment methods based on weight (or price, quantity) and address?**

1. Define a new Shipment Method (table Shipments).
2. Put WeightFrom=0 and WeightUntil=10 for cart total weight between 0 and 10 so this shipment method will appear only in that case.
3. If you want that Shipping method for California state, put CA in stateCode and stateCodeEq=-1 (That shipment will apply only for California). To define another shipment for the other states you can include another shipment row with CA in stateCode and stateCodeEq=0.

*You can also use Real Time UPS calculation instead of defining all shipping rules manually.*

---

**How can I import the product database from other programs?**

You can use Free Diagnostics and Tools utility to perform this task. Consider that you will need the exported products table from the previous program in a plain text format, and that only basic attributes will be imported. If you need a fine importing automatic procedure contact us to make an estimate based on your file format.

### **How can I give special prices to some customers?**

Using BackOffice +, Sales and Customers menu, List All Customers, you can assign special prices for certain customers. Remember that the customer must log in in order to be authenticated and receive the special prices.

---

### **How can I define a Tax of 0.21 for customers in one state (country, zip) and no Tax if the user is from another place?**

1. Using BackOffice+ define a new taxPerPlace record.
  2. Insert a new row containing stateCode=CA, stateCodeEq=-1 and taxPerPlace=0,21.
- 

### **How can I define different Taxes depending on the product if the user is from Italy?**

1. Using BackOffice+ define a new taxPerProduct record.
  2. Insert a new row with CountryCode=IT, countryCodeEq=1 and taxPerProduct=0,25
  3. You can add another row for another product with different Tax (0,28...).
- 

### **How can I force the user to select product variations like Color, Size, etc?**

You can use the setting pForceSelectOptionals=-1.

---

### **How can I configure the Fraud Protection Package in order to alert about suspicious orders without blocking them?**

You can use the setting pFraudPreventionSetting="caution".

---

### **How can I remove shipping selection? My store doesn't need shipping options.**

Insert only one shipping method named: "No shipping needed".

You can also hardcode shipping selection by replacing the drop down in comersus\_selectShipment.asp by one hidden field

```
<input type="hidden" name="idShipment" value="1">
```

---

Rename also the Submit Button with: "Press here to continue" and make sure you have a Shipment Method defined in your database with idShipment=1.

---

### **How can I distribute serials or download links automatically with each purchase of my product named "Software-2001"?**

Edit the product "Software-2001" and insert the serial or download link in DigitalGoods field (emailText). Configure your payment gateway to make a silent response to comersus\_gatewayXXSilentResponse.asp (rename the file for security reasons). Each time you receive a payment, the information entered into emailText will be sent to the customer by email.

You can also distribute serials and download links using PayPal.

1. Log in to your PayPal account, go to Profile, Instant Payment Notification Preferences.
2. Change IPN: on, IPN Url:  
[http://yourDomain.com/comersus/store/comersus\\_gatewayPayPalSilentResponse.asp](http://yourDomain.com/comersus/store/comersus_gatewayPayPalSilentResponse.asp)
3. Make some payment to your store using PayPal and test the configuration.

*Note: you can also make that distribution manually from BackOffice +, when you mark an order as paid.*

---

### **How can I set up PayPal IPN (Instant Payment Notification)?**

1. Log in to your Business or Premier PayPal account.
  2. Go to the 'Profile' subtab .
  3. Click on the 'Instant Payment Notification Preferences' link in the 'Selling Preferences' column.
  4. Click on Edit .
  5. Check the box and enter  
[http://www.yourdomain.com/comersus/store/comersus\\_gatewayPayPalSilentResponse.asp](http://www.yourdomain.com/comersus/store/comersus_gatewayPayPalSilentResponse.asp) to receive your IPN Notifications.
  6. Click on Save.
- 

### **How can I assign a product to several categories?**

If you are using BackOffice +, just select the categories from drop down box (you have 3 drop down boxes but you can assign one product to unlimited categories).  
If you don't have BackOffice +, or if you want to understand categories structure better, here you have a more complete explanation.

Since Comersus 3.7x you can assign one product to several categories. You just have to add a new row to categories\_products indicating idProduct, idCategory.

---



Example: Windows Millenium (idProduct=2) to categories Computers (idCategory=5) and OS (idCategory=8).

Add to rows:

2,5

2 , 8

---

### **My Gateway for online credit card payments is not included. Can I still use Comersus with it?**

Sure, you can send us the gateway documentation and we will try to include it in our next release. You can also make some modifications to the provided examples.

1. Open any comersus\_gatewayXXXX.asp and save it using a different name (like comersus\_gatewayYourGatewayHere.asp).
2. Check your gateway system documentation and change the Action Form tag in the script comersus\_gatewayYourGatewayHere.asp .
3. Check also all necessary hidden and non-hidden fields. Replace those INPUT tags using gateway system documentation (usually you will need to verify total field, idOrder - Invoice number - ,personal data of the customer, CC number and expiration date).
4. Add a new payment method named “Credit Cards” or similar with redirectionUrl pointing to the new script renamed.

---

### **I don’t understand how Real Time Shipping (UPS or USPS) feature works**

Real Time UPS and Real Time USPS packages are included in some Power Packs. Real Time Shipping disables all manual shipping settings defined and acts as an interface between Comersus and UPS/USPS.

When the customer makes the checkout process, Real Time Shipping sends all relevant transaction details like: total weight, shipping address at origin and shipping address at destination, etc. The package retrieves in Real Time 4/5 configurable shipping types for those specifications and then returns to Comersus in order to create a Drop Down Box showing different combinations of shipping types and shipping charges. The customer completes the order as usual. All this process is hidden to the customer and it takes no relevant time to get the Real Time Quotes.

---

### **Can I use one BackOffice Package for multiple stores?**

BackOffice+ comes with Per Store License, so you can install just one copy of the BackOffice software in your server. Anyway you can still use one BackOffice with several stores by developing a script that connects the BackOffice to different stores at login time. Check out Reseller Kit Hosting Company Edition and Reseller Kit Software Integrator Edition if you need special prices for Per Server and Unlimited licenses.

---

### **My BackOffice+ shows demo warnings everywhere. How do I disable demo mode?**

---

You have to change the setting pDemoStore = 0.

---

### **How can I replace the “No Image Available” graphic file?**

Whenever you don't upload images for a certain product, a default graphic is shown on any page that displays information about that product (search pages, product details page, etc.). You can easily replace the default graphic with your own by following these simple steps.

1. Create the new image file that will be displayed whenever a product image is not available. The image should be 100 x 100 pixels.

2. Save the file as “**imageNa.gif**”.

Upload the file to the “comersus/store/catalog” subfolder on your Web server, using any FTP program, or using the Upload Product Images module of Comersus, which is located in the Manage Products menu of the Comersus administration console.

From now on this image will be displayed whenever a product image is not available.

---

### **How can I limit the admins access to certain parts of the BackOffice?**

Using BackOffice+ you can create a new admin record and assign an existing admin level such as moderator (admin level 50) or listing (admin level 75) or you can also create a new level. Those admins will have access only to specific parts of the BackOffice that you can limit by modifying page level variable.

For example, the script comersus\_backoffice\_menuListing.asp has this header:

```
<%  
' Comersus BackOffice  
' e-commerce ASP Open Source  
' Copyright Rodrigo S. Alhadeff, Comersus  
' May, 2002
```

---

```
' http:// www.comersus.com  
pPageLevel=Cint(75)  
%>
```

In this script the line pPageLevel=Cint(75) says that all the admins whose admin level is more than 75 will receive this message from the script: “You don't have enough permissions”.

Knowing this you have to modify this line pPageLevel=Cint(75) from the script in order to limit the access by the different admins.

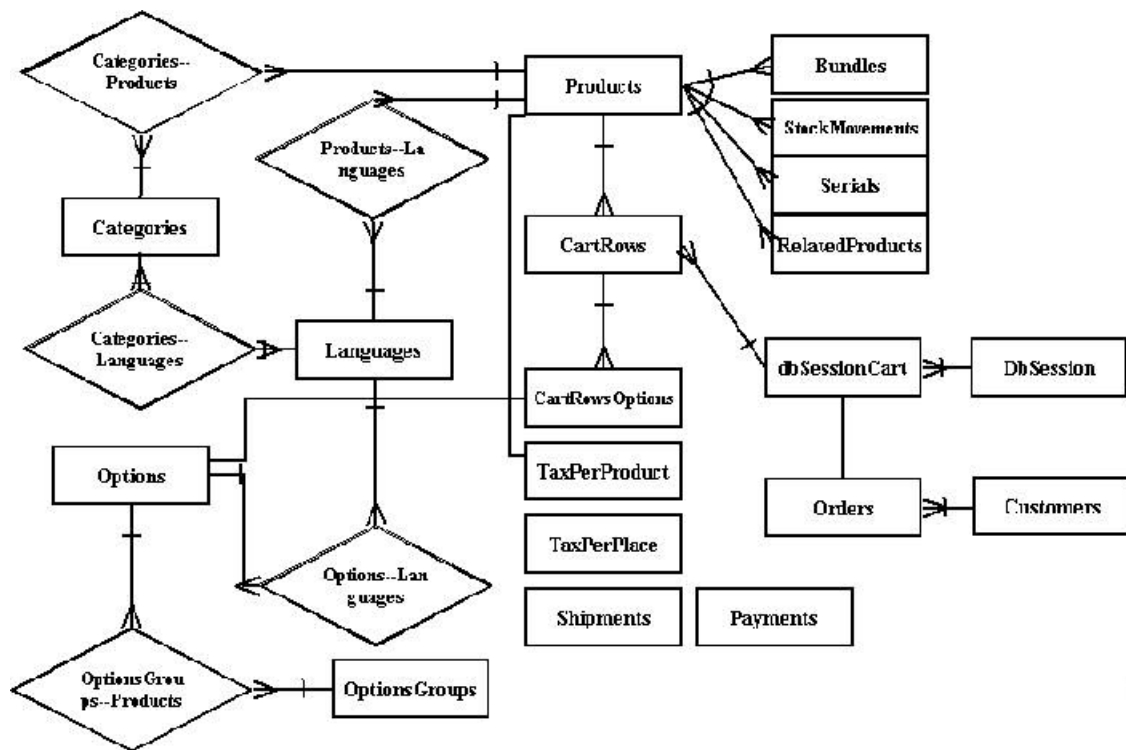
---

For an **updated list** of answers to frequently asked questions, visit the Public Forum located at the following address: [http:// www.comersus.org/ forum](http://www.comersus.org/forum)

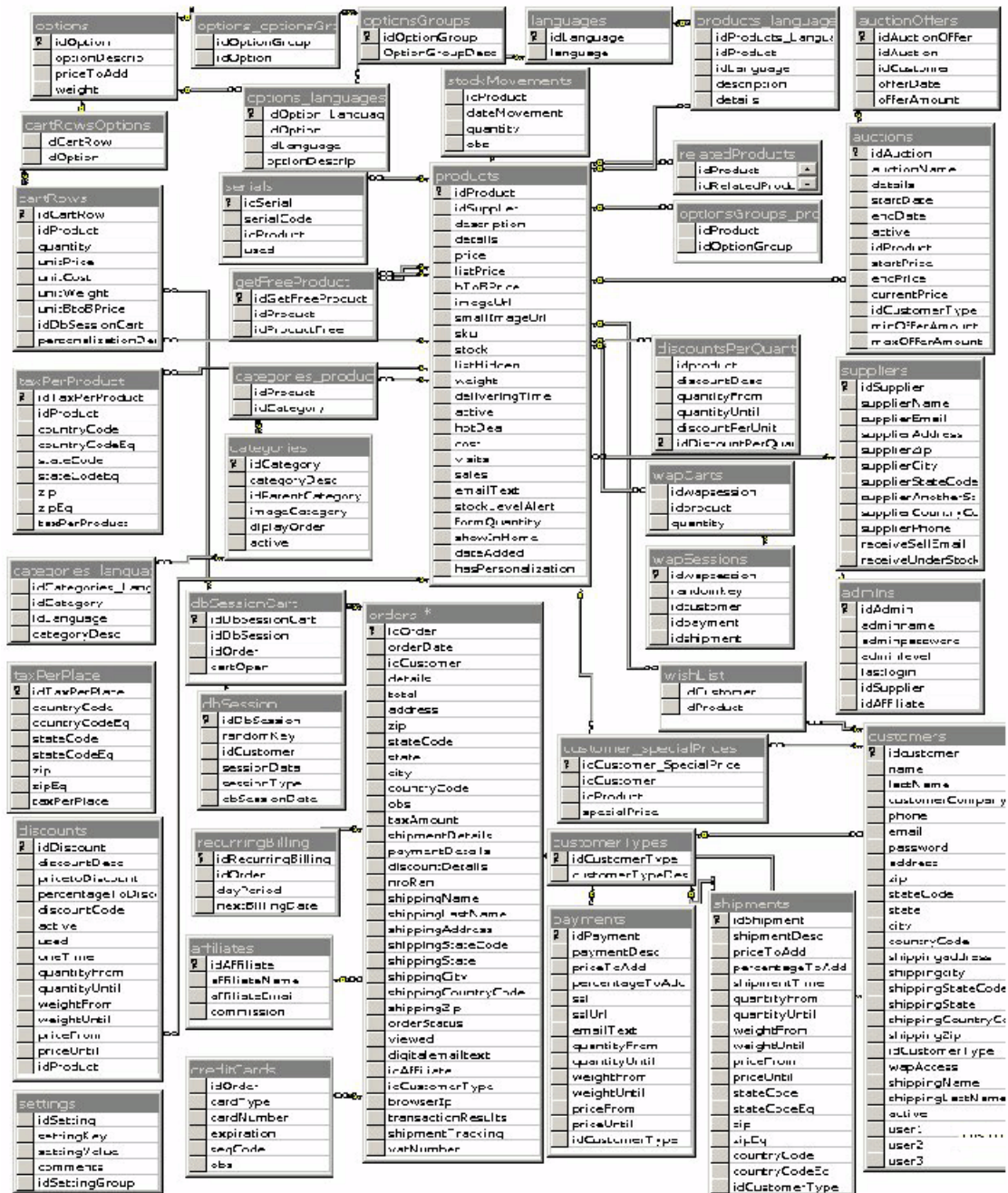
## Appendix E

---

### ERD Database Chart



## Relationships and fields



## Database description

Table	Field	Details
<b>admins</b>	<i>Administrator users for the BackOffice</i>	
	idAdmin	Unique key field for the table
	adminName	Name of the admin user
	adminPassword	Encrypted password
	adminLevel	Lower level means more permissions inside BackOffice+
	lastLogin	Date of last login for security purposes
	idSupplier	Id of the supplier for BackOffice+ private login
	idAffiliate	Id of the affiliate for BackOffice+ private login
<b>adminStats</b>	<i>Statistics for the BackOffice, to be replaced soon</i>	
	newEmailsNewsLetters	Used as a flag for newsletter distribution
	sinceLastTimeIndexVisits	Used to store since last time index visits
	totalIndexVisits	Used to store total index visits
<b>affiliates</b>	<i>Affiliates of the store</i>	
	idAffiliate	Unique key field for the table
	affiliateName	Name of the affiliate
	affiliateEmail	Email of the affiliate
	commission	commission for the affiliate
<b>affiliatesTransfers</b>	<i>Transfers made to affiliates</i>	
	idAffiliateTransfers	Unique key field for the table
	idAffiliate	ID of the affiliate used for this transfer
	amount	Transfer amount
	transferDate	Date of the transfer
<b>auctionOffers</b>	<i>Bids posted</i>	
	idAuctionOffer	Unique key field for the table
	idAuction	Id of the auction
	idCustomer	Id of the customer that did post the bid
	offerDate	Bid date
	offerAmount	Bid amount
<b>auctions</b>	<i>Auctions of the store</i>	
	idAuction	Unique key field for the table
	auctionName	Description of the auction
	details	More details about the auction
	startDate	Release date of the auction
	endDate	Last day of the auction
	active	Enable or disable the auction
	idProduct	Id of the product used for this auction
	startPrice	Starting price
	endPrice	Ending price
	currentPrice	Current price
	idCustomerType	Auction defined for this customer type
	minOfferAmount	Minimum offer
	maxOfferAmount	Maximum offer
<b>blockKeywords</b>	<i>Keywords to be used by fraud filtering</i>	
	idBlockKeyword	Unique key field for the table

<b>bundles</b>	keywordText	keyword to be blocked
	<i>Bundle products structure</i>	
	idBundle	Unique key field for the table
	mainIdProduct	id of the product that will appear in search and listing
<b>cartRows</b>	idProduct	id of each sub-product of the bundle
	<i>cart details structure for current carts and historic orders</i>	
	idCartRow	Unique key field for the table
	idProduct	id of each product in the cart
	quantity	Quantity for that product
	unitPrice	Price per unit
	unitCost	Cost per unit
	unitWeight	Weight per unit
	unitBtoBPrice	Wholesale price per unit
	idDbSessionCart	id of the dbSession cart record
	personalizationDesc	Personalization text of that product
	<i>Variations for cart contents</i>	
<b>cartRowsOptions</b>	idCartRow	Id of the cart row with this variation
	idOption	Id of the variation related to the cartRow
	priceToAdd	Price of the variation
	optionDescrip	Variation name
<b>categories</b>	<i>Categories structure</i>	
	idCategory	Unique key field for the table
	categoryDesc	Category name
	idParentCategory	Id of the parent category, NULL for root
	displayOrder	Index order for display purposes
	active	Enable or disable the category
	imageCategory	Image file name for the category
	<i>Translations for categories</i>	
<b>categories_languages</b>	idCategories_languages	Unique key field for the table
	idCategory	Id of the category
	idLanguage	Id of the language
	categoryDesc	Translation of the category name for that language
<b>categories_products</b>	<i>RelationShip between categories and products</i>	
	idProduct	Id of the product
	IdCategory	Id of the category assigned to that product
	<i>Countries used for customers, orders, suppliers, etc</i>	
<b>countryCodes</b>	countryCode	Code of the country: US, BR, etc
	countryName	Complete name of the country
<b>creditCards</b>	<i>Off line credit card payments</i>	
	idOrder	Id of the order with this offline payment
	cardType	Credit card code type: VI, AM, etc
	cardNumber	Number of the card
	expiration	Expiration date
	seqCode	CVV2 code
	obs	Comments for this payment
	<i>Currency conversion with static table</i>	
<b>currencyStatic</b>	idCurrencyStatic	Unique key field for the table
	currencyName	Description of the currency
	conversion	Conversion factor considering main currency
	currencySign	Sign of the currency

<b>customer_specialPrices</b>	<i>Special prices for specific customers</i>	
	idCustomer_specialPrices	Unique key field for the table
	idCustomer	Id of the customer
	idProduct	Id of the product
	specialPrice	Special price of that product for that customer
<b>customers</b>	<i>Customers table</i>	
	idCustomer	Unique key field for the table
	name	First Name
	lastName	Last Name
	customerCompany	Company
	phone	Phone
	email	Email
	password	Encrypted password
	address	Address
	zip	Zip code
	stateCode	State code for the main country
	state	Another state (if state code is not used)
	countryCode	Code of the country: US, BR, etc
	shippingName	If shipping is different than billing
	shippingLastName	If shipping is different than billing
	shippingAddress	If shipping is different than billing
	shippingCity	If shipping is different than billing
	shippingStateCode	If shipping is different than billing
	shippingState	If shipping is different than billing
	shippingCountryCode	If shipping is different than billing
	shippingZip	If shipping is different than billing
	idCustomerType	Customer Type (Retail, Wholesale, etc)
	idLanguage	Language of the customer
	bonusPoints	Current reward points
	wapAccess	If it has access to WAP store (cell phones)
	active	If customer is active
	user1	Custom field for customer record
	user2	Custom field for customer record
	user3	Custom field for customer record
<b>customerTypes</b>	<i>Customer types</i>	
	idCustomerType	Unique key field for the table
	customerTypeDesc	Description
<b>dbSession</b>	<i>Session headers stored in database</i>	
	idDbSession	Unique key field for the table
	randomKey	Random contents used to retrieve fields
	idCustomer	Customer of that session
	sessionData	Field to store temporary form fields
	sessionType	WEB, WAP, etc
	dbSessionDate	Date of the session
<b>dbSessionCart</b>	<i>Cart headers related to dbSession</i>	
	idDbSessionCart	Unique key field for the table
	idDbSession	Cart is related to one session
	idOrder	Filled only if the order is saved to relate cart to orders
	cartOpen	Boolean, the cart is closed when the order is saved
<b>discounts</b>	<i>Discounts with code</i>	



	idDiscount	Unique key field for the table
	discountDesc	Description
	priceToDiscount	Fixed price to discount
	percentageToDiscount	Percentage of the purchase to discount
	discountCode	Customer code for the discount
	active	Boolean, to enable or disable the discount
	used	Boolean, if it has been used
	oneTime	Use the discount one or many times
	quantityFrom	Filter for cart content
	quantityUntil	Filter for cart content
	weightFrom	Filter for cart content
	weightUntil	Filter for cart content
	priceFrom	Filter for cart content
	priceUntil	Filter for cart content
	idProduct	If the discount is specific for one product, otherwise is Null
<b>discountsPerQuantity</b>	<i>Discounts based on quantity ordered</i>	
	idDiscountPerQuantity	Unique key field for the table
	idProduct	Id of the product
	discountDesc	Description
	quantityFrom	Quantity bounds of that product
	quantityUntil	Quantity bounds of that product
	discountPerUnit	Fixed amount to discount per product
<b>generalTable</b>	<i>Only used for store conditions, to be replaced soon</i>	
	generalConditions	Store general Conditions HTML text
<b>getFreeProduct</b>	<i>Free products to be obtained by purchasing another product</i>	
	idGetFreeProduct	Unique key field for the table
	idProduct	Id of the main product
	idProductFree	Id of the free product to be obtained
<b>languages</b>	<i>Valid languages of the store</i>	
	idLanguage	Unique key field for the table
	language	Language description
<b>newsLetter</b>	<i>Newsletter emails</i>	
	idEmail	Unique key field for the table
	email	Email
<b>options</b>	<i>Variations structure</i>	
	idOption	Unique key field for the table
	optionDescrip	Description of the variation
	priceToAdd	Price of the variation
	weight	Weight of the variation
<b>options_languages</b>	<i>Translation for each variation</i>	
	idOption_languages	Unique key field for the table
	idOption	Id of the variation
	idLanguage	Id of the language
	optionDescrip	Translated description of the variation
<b>options_optionsGroups</b>	<i>Relationship between options and options groups</i>	
	idOptionGroup	Id of the option group
	idOption	Id of the option
<b>optionsGroups</b>	<i>Options groups</i>	
	idOptionGroup	Unique key field for the table
	optionGroupDesc	Description of the group

<b>optionsGroups_products</b>	<i>Relationship between options groups and products</i>	
	idProduct	Id of the product
	idOptionGroup	Id of the group
<b>orders</b>	<i>Orders table</i>	
	idOrder	Unique key field for the table
	orderDate	Date
	idCustomer	Id of the customer
	details	Products ordered snapshot
	total	order amount
	address	Billing Address
	zip	Idem
	stateCode	Idem
	state	Idem
	city	Idem
	countryCode	Idem
	obs	Customer comments
	taxAmount	Order tax amount
	shipmentDetails	Description and amount of shipment
	paymentDetails	Description and amount of payment
	discountDetails	Description and amount of discount
	nroRan	Random contents used to retrieve fields
	shippingName	Name for shipping
	shippingLastName	Name for shipping
	shippingAddress	Shipping Address
	shippingStateCode	Shipping Address
	shippingState	Shipping Address
	shippingCity	Shipping Address
	shippingCountryCode	Shipping Address
	shippingZip	Shipping Address
	orderStatus	Status of the order (1-5)
	viewed	If the order has been viewed in BackOffice+ URL of digital goods or any other information to be distributed
	digitalEmailText	
	idAffiliate	Id of the affiliate used for this order
	idCustomerType	Customer Type when the order was saved
	browserIP	IP of the client when the order was saved
	transactionResults	Authorisation codes, etc
	shipmentTracking	Shipment tracking information
	vatNumber	VAT number
	idLanguage	Language used when the order was saved
	wishListIdCustomer	If the order was posted using a wish list
	user1	Custom order fields
	user2	Custom order fields
	user3	Custom order fields
<b>payments</b>	<i>Payment types with rules</i>	
	idPayment	Unique key field for the table
	paymentDesc	Description
	priceToAdd	If the payment type increases the amount
	percentageToAdd	Idem with percentages of the order
	redirectionUrl	URL for payment forms
	emailText	Information about the payment to be distributed by email

<b>products</b>	quantityFrom	Filtering purposes
	quantityUntil	Filtering purposes
	weightFrom	Filtering purposes
	weightUntil	Filtering purposes
	priceFrom	Filtering purposes
	priceUntil	Filtering purposes
	idCustomerType	Type of customers for this payment
	<i>Products catalog structure</i>	
	idProduct	Unique key field for the table
	idSupplier	Id of the supplier
<b>products_languages</b>	description	Shorty description
	details	Details with HTML
	searchKeywords	Keywords for meta tags
	price	retail price
	listPrice	Comparison price
	bToBPrice	Wholesale price
	imageUrl	URL of the main image
	smallImageUrl	URL of small image
	sku	Product code
	listHidden	Hide the product in listings
	weight	Weight of the product
	deliveringTime	Time to obtain the product
	active	Product is active
	hotDeal	Product is a hot deal
	freeShipping	Product has free shipping
	isBundleMain	Product is the main of the bundle
	bonusPoints	How many bonus points provides
	cost	Cost price
	visits	How many visits
	sales	How many sales
	emailText	Digital goods to be distributed
	stock	Stock of the product
	stockSecurity	Level to maintain
	stockCostOrder	Cost of purchasing a new order
	stockDelay	Delay to replace since order is posted
	stockMinimumOrder	Minimum qty to order
	stockLevelAlert	Alert to administrators at this level
	showInHome	Show product in dynamic home
	dateAdded	Date of product creation
	rental	Product is rental
	length	Size
	width	Size
	height	Size
	hasPersonalization	Custom engraving, etc
	<i>Translation for products</i>	
	idProducts_languages	Unique key field for the table
	idProduct	Id of the product
	idLanguage	Id of the language
	description	Translation
	details	Translation

<b>recurringBilling</b>	<i>Structure to maintain recurring billing</i>	
	idRecurringBilling	Unique key field for the table
	idOrder	Id of the order to be re-created
	daysPeriod	Period to re-create the order
	nextBillingDate	Next date to create the order
<b>relatedProducts</b>	<i>Relationship between products and related products</i>	
	idProduct	Id of the product
	idRelatedProduct	Id of the related product
<b>reviews</b>	<i>Customer reviews</i>	
	idReview	Unique key field for the table
	review	Review text
	author	Name of the author
	email	Email of the author
	idProduct	Id of the product that has the review
	stars	How many stars 1-5
	subject	Review subject
	active	Review is active
<b>serials</b>	<i>Serial codes to be distributed</i>	
	idSerial	Unique key field for the table
	serialCode	Unique code
	idProduct	Id of the product that has this serial
	used	Serial has been distributed already
<b>shipments</b>	<i>Shipment types and rules</i>	
	idShipment	Unique key field for the table
	shipmentDesc	Description
	priceToAdd	Shipment fixed price
	percentageToAdd	Shipment percentage price
	shipmentTime	Time of the delivery
	quantityFrom	Filtering purposes
	quantityUntil	Filtering purposes
	weightFrom	Filtering purposes
	weightUntil	Filtering purposes
	priceFrom	Filtering purposes
	priceUntil	Filtering purposes
	stateCode	State code of this rule
	stateCodeEq	State code of the order equal to rule state
	zip	Zip code of this rule
	zipEq	Zip code of the order eq to rule
	countryCode	Country code of the rule
	countryCodeEq	Country code of the order equal to rule
	handlingPercentage	Percentage for handling
	handlingFix	Fix amount for handling
	idCustomerType	Customer type for this shipment
<b>stateCodes</b>	<i>State description and codes</i>	
	stateCode	Code for the state
	stateName	State name
<b>stockMovements</b>	<i>Movements of stock (including movements with each paid order)</i>	
	idProduct	Id of the product
	dateMovement	Date of the movement
	quantity	Quantity (positive or negative)

<b>storeNews</b>	obs	Comments
	<i>Simple news to be shown in store</i>	
	idStoreNews	Unique field
<b>suppliers</b>	newsText	News text (HTML allowed)
	<i>Suppliers table</i>	
	idSupplier	Unique field
	supplierName	Name of the supplier
	supplierEmail	Email of the supplier
	supplierAddress	Address of the supplier
	supplierZip	Address of the supplier
	supplierCity	Address of the supplier
	supplierStateCode	Address of the supplier
	supplierAnotherState	Address of the supplier
	supplierCountryCode	Address of the supplier
	supplierPhone	Phone of the supplier
	receiveSellEmail	Receive a notification with each sale
	receiveUnderStockAlert	Receive a notification with under stock
<b>taxPerPlace</b>	<i>Tax per location</i>	
	idTaxPerPlace	Unique key field for the table
	countryCode	Country code for this tax
	countryCodeEq	If the rule tax is equal to order tax
	stateCode	State code for this tax rule
	stateCodeEq	If the rule is equal to order
	zip	Zip of the tax rule
	zipEq	If the rule is equal to order
	taxPerPlace	tax percentage
	idCustomerType	Customer types
<b>taxPerProduct</b>	<i>Tax per product and location</i>	
	idTaxPerProduct	Unique key field for the table
	idProduct	Id of the product
	countryCode	Country code for this tax
	countryCodeEq	If the rule tax is equal to order tax
	stateCode	State code for this tax rule
	stateCodeEq	If the rule is equal to order
	zip	Zip of the tax rule
	zipEq	If the rule is equal to order
	taxPerProduct	tax percentage
<b>wapCarts</b>	<i>Carts stored for wap cell phones</i>	
	idWapSession	Unique key field for the table
	idProduct	Id of the product
<b>wapSessions</b>	quantity	
	<i>Session stored for wap cell phones</i>	
	idWapSession	Unique key field for the table
	randomKey	Random contents used to retrieve fields
	idCustomer	Id of the customer
	idPayment	Id of the payment used
<b>wishList</b>	isdShipment	Id of the shipment used
	<i>Customer wish list</i>	
	idCustomer	Id of the customer
	idProduct	Id of the product

## settings

*Store settings*

idSetting

Unique key field for the table

settingKey

Key of the setting (pStoreFrontDemo)

settingValue

Value for that key

comments

Key description

idSettingGroup

For grouping purposes

## rentals

*Rental table*

idRental

Unique key field for the table

idProduct

Id of the product

fromDate

Rental interval

untilDate

Rental interval

idOrder

Id of the order

## Appendix F

---

### Comersus Power Packs

The *Power Packs* are optional packages with additional features designed to increase the power of your Comersus Store. There are 3 Power Packs (Basic, Medium and Premium) which include a lot of features such as: BackOffice +, Random Product, Best Sellers, Email to friend, Fraud Prevention, Forgot Password, Auctions, Currency Conversion, Real Time UPS, Reviews, Related Products, Newsletter, Real Time United States Postal Service, Dynamic Price List, Digital Download, 1 Step Checkout and more. Here you will find a list with a summary of different packages.

**Note:** You can also develop these features if you have programming skills. However you will find it more reliable, sound and time saving to use this Official Power Packs designed by the same developers who created Comersus Free Distribution.

	Power Pack Basic	Power Pack Medium	Power Pack Premium
Price	\$49	\$239	\$370
BackOffice	None	BackOffice+ Full Featured	BackOffice+ Full Featured
Access DB	Yes	Yes	Yes
SQL Server DB	No	No	Yes
MySQL DB	No	Yes	Yes
Advanced Features	Basic	Medium	All advanced features
Payment Gateways	Basic gateways	Popular gateways	All payment gateways

*Note 1: You have to choose one payment gateway of available options for each Power Pack. Only Reseller Kits includes all payment gateways.*

*Note 2: features of each package and prices may change. Visit [comersus.com](http://comersus.com) to verify the latest features of each Power Pack.*

**Why do you sell Power Packs if Comersus is Open Source?:** there are several business models associated to Open Source Software. We choose this option of charging for services and for great value Power Packs. However any user may develop their own Power Pack replacements since we provide all the documentation and assistance to customize Comersus.

More information about Comersus Power Packs at <http://www.comersus.com/store>

# Appendix G

---

## Programming reference

**H**ere you will find a general reference to customize Comersus Cart. With simple lines of code you can retrieve and insert data into Comersus database. We will also provide a Vbscript reference so you can manipulate the information and create advanced scripts to extend default functionality of the cart.

### Retrieve data from the database

1. Open your text editor and create a new file with .asp extension placed inside comersus/store folder.
2. At the beginning of the script place all the necessary includes.

```
<!--#include file="../includes/settings.asp"-->
<!--#include file="../includes/databaseFunctions.asp"-->
<!--#include file="../includes/getSettingKey.asp"-->
<!--#include file="../includes/sessionFunctions.asp"-->
```

Note: settings and databaseFunctions are used to establish a database connection to retrieve or insert data. getSettingKey and sessionFunctions are used to retrieve certain configuration keys from settings table.

3. Open the ASP tag and enter the basic lines needed in almost all headers. In this case we are telling the web server to continue, even if some error occurs, we define some local variables used for the database connection and we retrieve a configuration key (the name of the logo image).

```
<%
on error resume next
dim connTemp, rsTemp
pCompanyLogo = getSettingKey("pCompanyLogo")
4. We will get how many customers we have in the store with a simple SQL query
mySql="SELECT COUNT(*) AS pCount FROM customers"
call getFromDatabase (mySql, rsTemp, "test")
%>
```

5. Then we print the result using the store layout defined by header and footer templates.
- ```
<!--#include file="header.asp"-->
```



```

<br>There are <%=rstem("pCount")%> customers in this store.
<%call closeDb()%>
<!--#include file="footer.asp"-->

```

If you execute this script you will get the number of customers printed on the screen.

In this case the result of the SQL Query was just one row, so we didn't have to iterate between the recordset. What if we need the ability to show a listing? We will have to make a loop to print all returned records.

1. First of all we send the new SQL Query. In this case we will get the idproduct, the sku and the stock for the whole catalog.

```

mySql="SELECT idProduct, sku, stock FROM products"
call getFromDatabase (mySql, rsTemp, "test")

```

2. If the query returns an empty recordset we redirect to a message screen informing this situation

```

if rsTemp.eof then response.redirect
"comersus_message.asp?message=" & Server.Urlencode("There are no products in the
database")
%>

```

3. Then we print the layout and we make the iteration inside the recordset

```

<!--#include file="header.asp"-->
<%do while not rsTemp.eof%>
<br>ID: <%=rstem("idProduct")%> - SKU: <%=rstem("sku")%> - STOCK:
<%=rstem("stock")%>
<%rsTemp.movenext
loop%>
<%call closeDb()%>
<!--#include file="footer.asp"-->

```

### Inserting data in the database

The situation is very similar. In this case we will add a new supplier named John Doe to the database.

```

mySql="INSERT INTO suppliers (supplierName) VALUES ('John Doe')"
call updateDatabase (mySql, rsTemp, "test")

```

```
response.redirect "comersus_message.asp?message=" & Server.Urlencode("Supplier added.")
```

```
call closeDb()
```

Note that we have used `updateDatabase` function instead of `getFromDatabase`. Since we used a query to add a record to the database, we don't need to show any result from the database. We only redirect to a message screen with a confirmation message.

## Vbscript Reference

Comersus was developed using Active Server Pages with Vbscript programming language. Here you can find a reference with most used sentences.

### Conditional Statements

You can control the flow of your script with conditional statements and looping statements. Using conditional statements, you can write VBScript code that makes decisions and repeats actions.

#### IF THEN ELSE

The **If...Then...Else** statement is used to evaluate whether a condition is **True** or **False** and, depending on the result, to specify one or more statements to run. Usually the condition is an expression that uses a comparison operator to compare one value or variable with another

```
If value = 0 Then
```

```
    Response.write "The value is 0!"
```

```
End if
```

### Looping

Looping allows you to run a group of statements repeatedly. Some loops repeat statements until a condition is **False**; others repeat statements until a condition is **True**. There are also loops that repeat statements a specific number of times.

```
Do while not rstemp.eof
```

```
    Response.write "<br>Record: " & rstemp("idProduct")
```

```
    rstemp.movenext
```

```
loop
```

### For Next

Repeats a group of statements a specified number of times.

```
For f=0 to 10
```

```
response.write "<br>Number:"&f
```

```
next
```

## Functions

Array(): Returns a **Variant** containing an array.

Cint():Returns an expression that has been converted to a **Variant** of subtype **Integer**.

Cdbl():Returns an expression that has been converted to a **Variant** of subtype **Double**.

Date: Returns the current system date.

Instr():Returns the position of the first occurrence of one string within another..

Left():Returns a specified number of characters from the left side of a string.

Len():Returns the number of characters in a string or the number of bytes required to store a variable.

## SQL Reference

Create a table

```
CREATE TABLE tableName
```

```
(  
columnName1 dataType,  
columnName2 dataType,  
.....)
```

Create index

```
CREATE UNIQUE INDEX indexName  
ON tableName (columnName)
```

Delete index

```
DROP INDEX tableName.indexName
```

Delete table

```
DROP TABLE tableName
```

Select

```
SELECT columnName(s) FROM tableName
```

Select with GroupBy

```
SELECT column,SUM(column) FROM table GROUP BY column
```

Insert new rows

```
INSERT INTO tableName (column1, column2,...)  
VALUES (value1, value2,...)
```

Update

```
UPDATE tableName SET columnName = newValue  
WHERE columnName = someValue
```

Delete rows

```
DELETE FROM tableName WHERE columnName = someValue
```

## Contact Information

---

### Comersus Open Technologies LC

8345 NW 66TH ST #3537  
Miami FL 33166-2626  
United States  
Phone: 1 (305) 735-8008  
[http:// www.comersus.com](http://www.comersus.com)

**Contact us for installations, modifications, training, contributions and Power Packs. All suggestions are welcome.**

**\* Ask about Reseller Plans, packages designed for Hosting Companies and investor opportunities.**

## **Final Notes and acknowledgments**

*Vbscript reference based on Vbscript Language Reference, Microsoft Corporation*

*This user's guide was based on users and customers messages and on the original user's guide made by Early-Impact. Your contributions are important and welcome. Please contact us at <http://www.comersus.com/contact.asp> to send us corrections to this User's Guide. If you are interested in maintaining a translated version of this document let us know.*